



2013 ANNUAL REPORT

MASONIC CHARITIES

of the R.W. Grand Lodge F. & A.M. of Pennsylvania



"I'm thankful to the Lord, to be here. I see on television what's going on in the world, and I'm grateful to be here. Actions speak louder than words. They certainly show a lot of love here."

~ Alice Kestler, a resident of Masonic Village at Elizabethtown, shown below (right) with her friend, Helen Brookhart



A message from

R.W. GRAND MASTER ROBERT J. BATEMAN

As the builders and cultivators of our Masonic Charities, our Family of Freemasonry shares a lot of responsibility, as well as a lot of success. Fortunately, with the power of our fraternal love and the strength of our compassionate legacy, we have the tools to successfully grow and influence the lives of countless others.

Through The Masonic Library and Museum of Pennsylvania, housed in the majestic Masonic Temple, we preserve and exhibit Masonic and American history for current and future generations to learn about and appreciate. An architectural masterpiece, the National Historic Landmark remains a culturally significant part of the city of Philadelphia and the Commonwealth.

The Masonic Villages impact more than 2,800 residents and their communities with services they need, regardless of their ability to pay for them. With security, compassionate care and nourishment, seniors enjoy life with dignity and comfort. The Masonic Children's Home is a safe home for 40 youth, where in addition to receiving love, health care and guidance, children benefit from support for educational, vocational and extracurricular pursuits so they can build a successful future.

The Pennsylvania Masonic Youth Foundation instills Masonic values in young adults through character-building and educational programs, leadership opportunities and service projects.

The Masonic Charities Fund offers help at a local, national and global level for Masonic and non-Masonic projects.

This 2013 Annual Report details how generous donations enabled each charity to fulfill its mission. Read on for inspiring stories and ways donors have provided foundations for growth, support for success, compassionate care and hope for the future.

Your continued support is deeply appreciated. If you are interested in giving toward any of the charitable opportunities mentioned in this report, please complete and return the enclosed envelope. Should you choose to make a provision for one of the Masonic Charities through your estate plans, we invite you to join the Franklin Legacy Society, described on p. 35.

Thank you for your interest in and dedication to our Masonic Charities.

Robert J. Bateman



THE MASONIC CHARITIES FUND

The Masonic Charities Fund was established in 1993 by the Grand Lodge of Pennsylvania. Contributions to the fund benefit various charitable organizations, both Masonic and non-Masonic.

Most recently, the Masonic Charities Fund has focused its support on the restoration and preservation of the Masonic Temple in

Philadelphia. The Masonic Temple stands as a monument of the strength, stability and energy of the Craft in Pennsylvania. It is a significant priority to ensure that future generations may benefit from the past accomplishments of Freemasonry exemplified through and within the Masonic Temple.

THE MASONIC LIBRARY & MUSEUM OF PENNSYLVANIA

One North Broad Street • Philadelphia, PA 19107 • 215-988-1900 • www.pagrandlodge.org



What We Did in 2013

Preserved a National Historic Landmark

The Masonic Temple in Philadelphia was constructed in 1873, and as with any aging work, time has left its mark. While the lodges were called off from labor in the summer months, much needed repairs were made in the lodge rooms. The benches in both Egyptian and Ionic Halls were refurbished, and plaster and paint repairs were completed. In Egyptian Hall, the painter discovered the dates 1873 and 1888 with initials indicating when that work was done, and by whom.

The Grand Master's office complex also received much needed plaster and paint repairs and new LED light fixtures. Shut-down sensors were installed to detect any condensation in air conditioner water pans to prevent water leaks from causing expensive plaster damage. Upgrades began to the sub-basement ventilation system.

These repairs were done with funds from the Temple Preservation Fund, as well as donations from lodges and the brethren.

Staff Answered the Call ... or Email

The Masonic Library and Museum of Pennsylvania staff welcome questions from

Masons, researchers and the general public. Staff answered more than 450 genealogical and general inquiries. Researchers and students were interested in various types of biographical histories, symbolism of the Craft and the history of Royal Arch Masonry in Cuba and Mexico.

Increased Exposure

Special guests at the Masonic Temple included The Art Institute of Philadelphia photography students who captured the beauty of the Masonic Temple and learned about Freemasonry while practicing skills of their trade. Library and Museum staff gave presentations to local and international groups about Pennsylvania Masons and anti-Masonic movements in the United States. They also welcomed approximately 12,000 visitors to the Masonic Temple for tours and events.

To help support the Masonic Temple/Masonic Library and Museum of Pennsylvania, staff compiled a coffee table book, "The Masonic Temple in Philadelphia." It is available for purchase through the Museum Shop and online.

The mission of The Masonic Library and Museum of Pennsylvania is to maintain and operate a library for the use of Freemasons and the general public and to maintain and operate a museum for the display of items of whatever character dealing with Freemasonry and related subjects.



Bringing the Temple to Life

For close to 30 years, painter Michael Walzer (*shown in right photo on p. 4*) has helped to restore detailed decorative elements throughout the Masonic Temple. It has become more than a job for him as he has immersed himself in the history and culture of the 141-year-old building.

“It’s the most decorated building I’ve ever worked on,” he said. “The gold and silver leafing, wood graining, stencils, murals – all those kinds of things – every square inch is just great. I’ve worked in different theatres, churches and other historical buildings throughout Philadelphia, but the [Masonic] Temple is like those times ten. It’s beautiful. The hallways and doorways are unique. There’s something to look at everywhere.

“As an artist, I take pride in its significance, and it’s humbling to work on it. The fact that I’ve been working on it for so long, I feel a certain rhythm. You walk in there, and you feel peace and awe amidst the elements of the artwork and the architecture. It’s been a great experience.”

While standing on ladders and scaffolding, Michael has uncovered names and dates left by architects and artists so he can tell when a particular sculpture, room or mural was updated. “It’s like a time capsule,” he said. “It’s fascinating to uncover something under a century of dust, restore it and bring it back to life. It has my handprint, but I try to make it look the same as before the damage.”

When he finds a chance to put his paintbrush down, he has explored items displayed in the Masonic Library and Museum, such as those of President and Bro. George Washington, Bro. Rudyard Kipling and Bro. Benjamin Franklin. He also enjoys gaining knowledge from the building’s staff.

“There are always interesting things going on,” Michael said. “There’s so much history. I love adding to it.”



CONDENSED FINANCIAL SUMMARY

Condensed Statements of Unrestricted Activities for the years ended Dec. 31, 2012 and 2013

	2012	2013
Operating revenues	\$293,265	\$304,836
Operating expenses	2,891,221	3,047,313
Loss incurred in the fulfillment of our charitable mission <i>This loss has been historically covered by the following support from the members and friends of the fraternity:</i>	(2,597,956)	(2,742,477)
Gifts and Bequests	238,704	132,007
Contribution from Masonic Villages	1,888,298	1,906,559
Contribution from Grand Lodge	0	23,000
Contribution from Masonic Charities Fund	300,000	500,000
Investment income and realized gains earned on accumulated past support from the members and friends of the fraternity	22,062	35,884
Deficiency of revenues, support and gains over expenses	\$(148,892)	\$(145,027)

Any excess of revenues and support over expenses is reinvested so The Masonic Library and Museum of Pennsylvania can continue to provide services.



What We Did in 2013

Increased Our Numbers

Each Masonic youth group has a retention and recruitment goal, based on their particular needs and resources. Recruiting new members is dependent on having enough adult supervision for a larger group. Greater membership is possible when more adults are willing to volunteer to serve. More than 600 adult leaders were recognized for their service with a Masonic Youth Leader Medallion.

Thanks to dedicated leaders and youth and the support of Masonic lodges, three new Rainbow Girls Assemblies were added: Carlisle No. 171, Harmony No. 74 and Lehigh Valley No. 190.

Helped Others in the Community

To practice the virtues and skills they learn, our Masonic youth commit to supporting charities and their local community. Job's Daughters hold an annual hike on the grounds of the Masonic Village at Elizabethtown to raise funds for the Hearing Impaired Kids Endowment (HIKE). They also gave household items for children in need to local families, a children's hospital and a local police department. The Rainbow Girls sold pins and collected change to raise more than \$7,200 for the Make-a-Wish Foundation, and \$1,000 for the MyStuffBags program for kids in shelters. The young men of DeMolay raised \$3,900 for the Children's Dyslexia Centers, and they concluded a two-year \$35,000 contribution drive to support a DeMolay member who had a successful kidney transplant in July.

Just the Facts

- Criminal background checks for all new adults working with youth groups (paid for by PMYF): 62
- Teachers and administrators who participated in anti-bullying seminars: 1,041
- Adults who received the HODEGOS Award for their outstanding leadership of youth programs and creating awareness for the Grand Lodge of Pennsylvania's support of Masonic youth: 6
- PA Scout Leaders who received the Daniel Carter Beard Masonic Scouter Award: 21
- Child Identification Program (CHIP) events: 35
- Children who were CHIP'd: 1,685
- PMYF scholarships awarded: 47, totaling \$98,500
- LifeSkills Conference attendees: 96
- LifeChangers Conference attendees: 13



The mission of the Pennsylvania Masonic Youth Foundation (PMYF) is to lead the Masonic fraternity in providing services on behalf of young people, and training for adults who work for the betterment of youth. To accomplish this mission, the Foundation will enhance the programs of the Masonic youth groups; support initiatives to keep children safe from violence, abuse and exploitation; and provide specialized education for adults who offer leadership to youth in the Commonwealth.



A Profound Impact

In preparation for his term as Worshipful Master of Riverside Lodge No. 503, Wrightsville, Bro. Richard Snyder became acquainted with the Riverside Chapter of DeMolay. He started volunteering on their advisory board and watched the effect the youth group had on its participants. It was such a profound impact that he has since committed 25 years to working with Masonic youth groups.



“It’s a well-rounded program,” he said. “Youth develop leadership qualities. There’s also the social aspect: meeting friends across Pennsylvania and being around reputable adults who can influence their character-building.

The benefits are there for the taking, if the youth apply themselves.

“Masons should support youth. We need qualified adults for the programs to exist and to help youth meet objectives. It’s important for adults to offer these young kids their own experiences and make future leaders.”

Bro. Rick also volunteered with Job’s Daughters when his two daughters participated.

“They became strong individuals,” he said. “The skills they learned helped them in school and then in their jobs. They’re team players who learned how the corporate world works and how to give back to society. They learned how to deal with everyday challenges.”

Bro. Rick encourages others to physically and financially support the Pennsylvania Masonic Youth Foundation.

“It’s one of those things that requires sacrifice of money or time or both,” he said. “It’s about pride and heritage.”

The personal satisfaction Bro. Rick feels from positively impacting youth has inspired his two-and-a-half-decade commitment. The health benefits aren’t bad either.

“All the sports keep me young and active,” he said.

CONDENSED FINANCIAL SUMMARY

Condensed Statements of Unrestricted Activities for the years ended Dec. 31, 2012 and 2013

	2012	2013
Operating revenues	\$71,293	\$71,981
Operating expenses	1,046,418	1,133,589
Loss incurred in the fulfillment of our charitable mission <i>This loss has been historically covered by the following support from the members and friends of the fraternity:</i>	(975,125)	(1,061,608)
Gifts and Bequests	307,558	55,139
Contribution from Masonic Villages	488,956	502,034
Contribution from Grand Lodge	27,568	62,321
Contribution from Masonic Charities Fund	0	14,000
Investment income and realized gains earned on accumulated past support from the members and friends of the fraternity	477,927	866,817
Excess of revenues, support and gains over expenses	\$326,884	\$438,703

Any excess of revenues and support over expenses is reinvested so the Pennsylvania Masonic Youth Foundation can continue to provide services.

MASONIC CHILDREN'S HOME

One Masonic Drive • Elizabethtown, PA 17022 • 717-367-1121, ext. 33301 • www.masonicchildrenshome.org



What We Did in 2013

Provided Foundations for Growth

Fulfilling Free Time: While staff instilled good study habits and work ethic in youth at the Masonic Children's Home, they also encouraged participation in extracurricular activities such as music, art and dance lessons; sports; religious activities; Masonic youth groups; volunteer opportunities; and part-time employment. Youth on the Entertainment Committee brainstormed events like Cottage Cook-Offs, a scavenger hunt and holiday celebrations, which inspired teamwork and friendship.

Wish List Items: Thanks to the generosity of Bob and Joyce Umbaugh, long-time children's home donors and residents of Masonic Village, the children's home received a large fire pit with chairs and stone landscaping for added safety.

"When we all get together, it creates good memories for me," Briar, age 14, said.

Generous donors also supported two cottage kitchen renovations and the purchase of a new vehicle.

Celebrated a Milestone

Support from the Masonic fraternity and generous donors have changed the lives of more than 2,100 children over the last 100 years. Residents, staff, donors, alumni, volunteers and Grand Lodge officers celebrated the children's home centennial with a special dinner and program on Oct. 5, and a worship service on Oct. 6. Everyone was invited to fill a time capsule with written memories, photographs and other memorabilia,

which will be re-opened in 25 years.

On Youth Appreciation Day, the Centennial Society Garden was dedicated to honor more than 50 members of the Masonic Children's Home Centennial Society with their names engraved in the brick walkway. As of Dec. 31, 2013, donors contributed \$7.3 million toward the Masonic Children's Home \$10 million Centennial Campaign.

Residents of the children's home committed to 100 hours of community service collectively in honor of the centennial, assisting LCBC Church, Derry Township and Masonic Village residents. In addition, various youth volunteered with Camp Ladybug and participated in the Adopt-A-Grandparent program at Masonic Village.

Enjoyed New Experiences

In celebration of the 100th anniversary of the Masonic Children's Home, youth enjoyed some well-deserved fun.

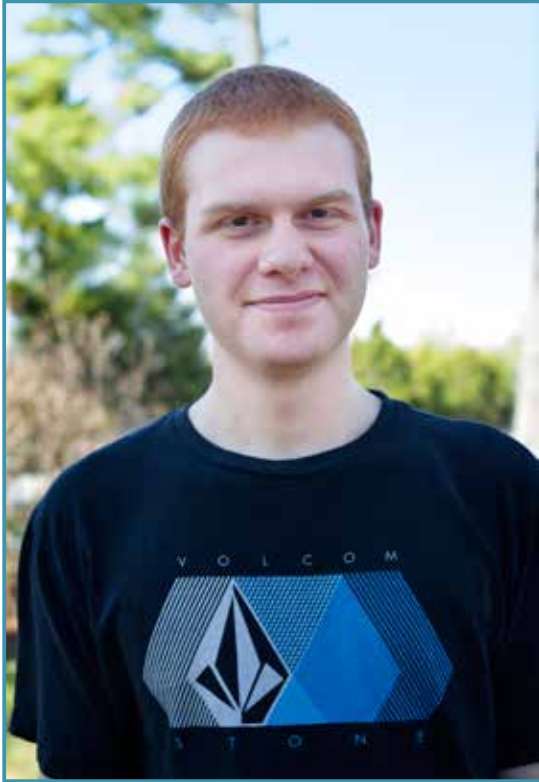
Disney World®: The journey of a lifetime began at 3 a.m., on June 22, as 37 youth and 12 staff headed to Florida. The youth visited Magic Kingdom®, Epcot®, Hollywood Studios®, Animal Kingdom® – and more!

"Disney World was my first big vacation," Isaiah, age 9, said. "My trip was really, really fun and really awesome!"

Phillies Game: Youth and staff joined donors and fraternal leadership at a Phillies baseball game on May 5. The Phillie Phanatic even made a surprise appearance in the suite. Tickets were generously provided by supporters of the children's home.

At one time, up to 40 youth – whose home or socioeconomic environments do not provide for their healthy growth and development – live in five cottages at the Masonic Children's Home. Staff create a supportive, homelike environment filled with guidance and love.





Arriving on the quaint campus of the Masonic Children's Home in August 2012, Jacob, then age 16, suddenly found himself part of a family of 40 youth and 38 staff. He wasn't sure what to expect.

He made the move with his younger brother, Jesse, and a bedroom was available for them to share, adding comfort to the transition. As the first month passed, he gradually grew comfortable in his new surroundings.

"Everybody here is really friendly," he said. "They respect me and my stuff. I get along great with others. The food is good, too. The house parents take good care of us."

Jacob has since found a good balance of assistance and independence at the children's home. He wakes up every morning, makes his bed and completes other chores. He has always been a good student, but he appreciates house parents and tutors looking out for him.

"They really keep you on your toes," he said. "They know your grades every week. Our house parents are great. They help you find a job and provide transportation."

During the winter months, Jacob and other youth assisted residents of Masonic Village with removing snow from their cars and helped staff clear walkways. The residents always showed their appreciation, reminding Jacob he's part of a larger family at Masonic Village.

He especially enjoys the holiday season at the Masonic Children's

Home and all the festivities. The night before Christmas break, all the youth gather for a worship service and then dinner at a local restaurant before going their separate ways for a week.

Jacob graduated from high school in June, and he will attend Penn State Harrisburg in the fall. His desire to give back to society has inspired him to major in criminal justice with the hopes of becoming a police officer and working his way up to detective.

Knowing the Masonic Children's Home will pay for his secondary education "makes me very sure about my future, like never before," he said. "[Staff] helped me find a college, which is great. They've prepared me for it, too."

In between college preparations, Jacob enjoys exercising and spending time with friends. He has a great interest in history; loves movies, especially "Batman" and other classics; and likes to play video games.

"Whoever gets to live here has a huge benefit," he said. "The environment provides so many opportunities. You just have to stay the course and believe in yourself."

He's already planning to visit the children's home while attending college to see his brother and all the friends he has made.

"I will never forget it," said the young man who is now confident he can handle his next step in life, thanks to the caring house parents, tutors and staff, donors, residents and everyone who has influenced him at the Masonic Children's Home.

Just the Facts:

- Seven youth moved into the Masonic Children's Home.
- An average of 18 youth made the honor roll each semester.
- Three high school seniors graduated and moved onto college. Nine students received support for higher education.
- Seven youth held jobs.
- Five youth volunteered in the community and eight participated in Masonic Village's Adopt-A-Grandparent program.
- Youngest child's age: 7
- Oldest youth's age: 18
- Staff members: 38



MASONIC VILLAGES

Dallas • Elizabethtown • Lafayette Hill • Sewickley •
Warminster • www.masonicvillages.org

Across the state, each Masonic Village location provides a unique environment for individuals to explore their passions and enrich their lives. Consistent high quality care and loving staff are the pillars upon which the Mission of Love stands. The support of generous donors, staff and volunteers impact more than 2,800 residents, from ages 7 to 100+.



What We Did in 2013

Enhanced and Celebrated Our Communities

The Masonic Health Care Center at the Masonic Village at Elizabethtown is in its fourth year of renovations, transforming neighborhoods (units) from institutional models into household designs. Residents now dine in country kitchens where they order from a menu and are enjoying the food so much, the need for supplements has decreased. New décor throughout living areas enhances comfort while staff work from less intrusive care bases.

Phase 3 of construction and renovations to the Sturgeon Health Care Center at the Masonic Village at Sewickley included four new kitchens. Residents enjoy the adjacent family/activity rooms with fireplaces and a large screen television, and the parlor rooms for parties and family gatherings. Many residents who did not typically leave their rooms now more frequently attend meals and participate in activities.

Residents and staff at the Bleiler Caring Cottage in Elizabethtown held an open house to celebrate the cottage's 15th anniversary of providing a loving home for eight adults with developmental disabilities.

A testament to staff dedication, the Masonic Village at Warminster earned a deficiency-free survey from the Department of Health for the third year in a row.

Worked Smarter

Looking at the delivery of services in new ways resulted in improvements ranging from staff realignments that saved \$25,000 at one campus to increased revenue from Medicaid of more than \$75,000 for all campuses, thanks to more accurate and detailed documentation of care provided to our residents. Thanks to staff members' hard work and attention to detail, residents benefit from enhanced services, while Masonic Villages receives the appropriate levels of reimbursement.

Engaged with the Community

Relationships with neighbors in the local community provide residents and staff with new opportunities to make friends and form partnerships. Masonic Village at Dallas offered several events open to the community including a Medicare 101 workshop, healthy aging seminar series, Nordic Walking and Tai Chi for Arthritis® classes. Other locations hosted support groups, AARP driving courses, health fairs, concerts, craft shows and more for the public.

Masonic Village at Elizabethtown welcomed Lancaster General Health Physicians Sycamore Square Family Medicine to the adjacent Sycamore Square Marketplace, which provides outpatient services to Masonic Village's residents and the local community.

At the Masonic Village at Warminster's annual Penny Party, the Advisory Council raised \$4,458. Thanks to visitors' purchases, proceeds will be used toward items which improve the quality of residents' lives, such as the Anytime Café which has enhanced the residents' dining options in 2013.

Planned for the Future

With requests for help from others, Ashlar Creative Solutions, LLC was formed as a wholly owned for-profit subsidiary of the Masonic Villages to provide management, development and consulting services to other senior service organizations. Leveraging the skills and expertise of Masonic Villages' leadership team, Ashlar helps others and generates income to help underwrite the Masonic Villages' nonprofit Mission of Love. Current clients include other Masonic communities across the country and continuing care retirement communities in Central Pennsylvania offering noncompetitive services.

Mission of Love

Our caring communities and services assist individuals, families and children in realizing their potential and enjoying the highest possible quality of life through the traditions of Freemasonry.

Our Vision is to be a Center of Excellence.

Our Mission of Love Values:

Quality of Life • Respect for the Individual • Quality Service • Outreach



COMPASSIONATE CARE

In 2013, through the generosity of Pennsylvania Freemasons, their families and others who have contributed to its mission, the Masonic Villages provided charitable care and services worth approximately \$31 million across the state to individuals unable to pay for their care.

Donations to the Masonic Compassionate Care Fund specifically help to cover health care costs of residents in Elizabethtown, Lafayette Hill, Sewickley and Warminster, and reassure them essential services will be available to them, even if their assets deplete. This includes unreimbursed Medicare and Medicaid costs, which totaled more than \$8.9 million in 2013. Medicare and Medicaid do not cover dental care and dentures, hearing aids, pastoral counseling, social services, occupational and speech therapy, television and telephone services and hair care services, all of which the Masonic Villages provide.



The Arline M. Hughes Caring Fund in Elizabethtown enhances residents' lives through:

- Expanded therapeutic recreation and music therapy programs that promote wellness and creative expression, such as raised garden beds (see p. 12).
- Specialized needs-specific items that will allow a resident to enjoy life more fully, but cannot be provided through other financial means, such as massage service as an alternative pain therapy.
- Special requests and wishes for end-of-life care.

Masonic Village Hospice in Elizabethtown helps people complete their lives joyfully, whenever possible.

At the end of life, people seem to experience sincere enjoyment from natural beauty that others may take for granted. For one patient on hospice, planting some flowers outside her window, as she was accustomed to for much of her life, brought fulfillment. For those who were able, rides around the campus with staff on the landscape department's John Deere vehicles created unexpected opportunities and conversations. Sights, sounds and tastes triggered feelings and memories. Seeing children led to stories of dolls and stickball. Sitting in the Veterans Grove led to reflections on World War II. Driving through the acres of trees led to stories of hunting and fishing. Every bird, flower and groundhog was appreciated. Masonic Village staff seek to provide opportunities for patients to connect with lifelong passions and interests whenever possible.

CONDENSED FINANCIAL SUMMARY

Condensed Statements of Unrestricted Activities for the years ended Dec. 31, 2012 and 2013 (dollars in thousands)

	2012	2013
Operating revenues	\$139,750	\$158,334
Operating expenses	151,451	160,558
Contributions to other Pennsylvania Masonic charitable organizations as part of Masonic Villages' mission	2,378	2,409
Loss incurred in the fulfillment of our charitable mission <i>This loss was covered by the following support from the members and friends of the fraternity:</i>	(14,079)	(4,633)
Gifts and Bequests	9,399	7,109
Realized gains earned on accumulated past support from the members and friends of the fraternity	12,526	26,488
Excess of revenues, support and gains over expenses	\$7,846	\$28,964

The operating expenses of the Masonic Villages have historically exceeded operating revenues. Through the generosity of Freemasons and friends of the fraternity, contributions and bequests enable the Masonic Villages to cover this deficit. The bequests which have been generously donated to the Masonic Villages have been invested, and the investment income earned on these funds allows Masonic Villages to continue its "Mission of Love" and caring for those in need. Any excess funds will be invested so Masonic Villages can continue to provide charitable services to our residents and the community in the future.



Raised garden beds are providing new opportunities for lifelong garden enthusiasts, as well as those with a blossoming passion.

At the Masonic Village at Elizabethtown, staff added raised gardens to the Roosevelt Courtyard of the Masonic Health Care Center. The gardens are raised at two heights: one for those in wheelchairs and one for those who

are standing. Both enable individuals who are no longer able to lean over or kneel down, to garden.

Designed by therapeutic recreation and landscape staff, the gardens “allow residents to engage directly in gardening rather than just watering or watching the garden grow,” Kirk Rakos, therapeutic recreation supervisor, said.

Dottie Dzink has been gardening her whole life and now spends several hours a week watering plants and removing dead flowers in the raised garden beds. “I love everything about gardening,” she said. “I like to bring flowers inside to enjoy.”

The raised gardens were partially supported through the Arline M. Hughes Caring Fund.



Residents of the Masonic Village at Lafayette Hill are also flexing their green thumbs in raised planters donated by Lodge No. 2, Philadelphia.

Once a week, residents head outside to maintain the planters, which include a variety of herbs and a few flowering annuals. They harvest the plants to use for cooking, crafts and sensory stimulation.

“The planters have given residents an opportunity to participate in meaningful work, connect with nature and enjoy fresh air,” Jennifer Grassi, recreation coordinator, said. “Gardening has numerous benefits such as maintaining motor skills, giving opportunities for decision-making and creative expression, as well as instilling hope and anticipation.”

QUEENS FOR A DAY

An annual tradition which began in 2008, the Enchanted Evening treats residents of the Star Points Building personal care residence and Sturgeon Health Care Center at the Masonic Village at Sewickley to a night of elegance and entertainment. Ladies are pampered as their hair is styled and nails polished. They wear sequined and silk dresses from their own closets or those donated by Order of the Eastern Star chapters, and don corsages on their wrists. Each woman has her photo taken in front of a scenic backdrop and receives a keepsake copy of the photo.

After being escorted to the beautifully decorated Great Hall, they dine on a gourmet meal and then relax with a strolling musician or other entertainer. Men enjoy their own celebration with beer and pizza.

The William Slater II Master Mason’s Club, made up of residents who belong to local lodges, organizes the event with the help and support of staff, volunteers, donors, Masonic lodges and Order of the Eastern Star chapters. The event provides wonderful memories for residents and a story to share with their families. Every lady deserves to be a queen for a day!



A Welcoming Woman

June Maag sees a world of opportunities before her. Her life is a testament to the expression, “When one door closes, another opens ...”

She met her first husband, Charles Eisemann, while living in New York. He was offered a job in Philadelphia in 1956, so the couple, their three children and June’s parents moved to King of Prussia.

Twenty years later, Charles passed away. Once her father died, June was alone, caring for her elderly mother, whom she eventually moved into a long-term care facility. “As a widow, I had no support,” she said. “I was all by myself since I am an only child, and all my children lived out of state.”

Then a door opened for her. In 1976, she met Bro. Fred Maag, Norristown Lodge No. 620.

“The first thing he wanted me to do was join Order of the Eastern Star [OES],” June, a member of Radiant Chapter No. 96, Norristown, said. “He knew how the social life was in OES. I served as Star Points and Chaplain and went through the chairs to become Worthy Matron and eventually made District Deputy.

“I still attend meetings. I gave up my car two years ago, so one of the Past Matrons takes me to the meetings. I’ve met a lot of good women who do things for others – OES is involved in a lot of charities. It has had a positive impact on my life, and I’ve had a lot of fun. My positions have given me confidence to speak before others.”

In 1996, June and Bro. Fred were ready to move to a retirement community, and choosing Masonic Village at Lafayette Hill was an easy decision. “We didn’t look anywhere else,” she said. “It was the best thing we ever did.”

Bro. Fred passed away in 2006. “Fred was well taken care of in the health care services area,” June said. “Everything is all in the same building, so I could bring him to events and our apartment, and we could enjoy each other’s company.

“More people should come to a place like this. You live longer. You have to walk to dinner, so you get exercise. You eat right. When you’re alone, you don’t eat right. Until I married Fred, I ate dinner by myself. Here, after Fred died, it was different. I had a table with friends to sit with. Sociability is very important. My kids don’t worry about me. They know I’m safe. I have a response system, so if I fall or need help, a nurse comes right over.”

In 2007, another new door opened for her.

That was when she took on the role of “Welcome Lady.” She created a booklet with information new residents need to know, and she visits every new resident within three days of their arrival. “I tell them everything you might ask your new neighbor,” she said. “I have the advantage of knowing everyone, and they know me. My name is on the front of the welcome kit.”

She will have the chance to welcome even more newcomers, thanks to an expansion and renovation project at Masonic Village started in May 2014, which will add 60 new apartments, an updated façade, improved parking and a new entrance.



*“I’m very blessed.
I count my blessings
every night.”*

“I’m used to volunteering and helping others,” she said. “It is in my DNA.”

For 20 years, June enjoyed volunteering in a thrift shop in King of Prussia which supported a home for abused women and children. She was also a Girl Scout leader for 25 years.

June volunteered in Masonic Village’s gift shop for eight years and for the Salvation Army for six months until she no longer had a car. Still desiring to assist others, June recently noticed in a leaflet at church that they needed a volunteer office worker. She called the church, located around the corner from Masonic Village, and now every Tuesday afternoon, she helps in the office – another door opened.

June also served as the president of the Retirement Living Residents Council at Masonic Village for two years. Her accomplishments include instituting an employee appreciation fund, establishing a library committee to keep the books organized and starting a committee for newcomers so they have someone to sit with at dinner.

“I help others find new friends,” she said. “I’ve made a lot of new friends myself. I’m very blessed. I count my blessings every night. I’m lucky to be here.”

Not only does June find open doors for herself, she is keeping them open for others. Masonic Village is equally blessed that June calls it home.

CHARITABLE DONATIONS

Plumb Club \$100-249.99

9th Masonic District
10th Masonic District
49th Masonic District
52nd Masonic District
200th Red Horse Squadron
Anonymous
Richard P. Ackley
Ellis C. L. Adams
Margaret M. Adams
Thomas R. Adams
Ray E. Affolder
Richard M. Agler
Bradley O. Albert
James H. Albert, Jr.
William C. Allen
James C. Alspach
Jack B. Anderson
James L. Anderson
Richard K. Anderson
William C. Anderson
Max W. Ankney
Roland C. Anstine
Alvin Applebaum
Curtiss S. Armstrong
Daryl F. Arnold
Edward M. Arnold, Jr.
Kenneth E. Arnt
Kenneth H. and Karen M. Arters
Alfred M. Asheuer
William G. Atherholt
Elizabeth Ann August
W. Ronald Aument
Gerald E. Aumiller
George C. Aurandt
C. William Autro
Robert W. Avery
Samuel P. Bachelier
Lanny R. Bachman, Sr.
Oren P. Bachman
Donald F. Backes
Robert C. Baessler
Robert I. Baierbach
Gregory L. Bair
Robert P. Baker
Russell P. Baker
Russell W. Baker
Susan C. Ball
George J. Balsley
Elizabeth R. Baltzer
Roger J. Bambach
Ronald L. Bamberger
Charles P. Barber
Robert D. Barbush
Donald K. Barnes
Frederick A. Barnhart

Paul V. Barr, Sr.
Marilyn Barsky-Bocella
John A. Bartle, Sr.
Robert M. Bashore, Jr.
Robert L. Bassler, Jr.
Robert J. and Joanne Bateman
Steven J. Bateman
Kenneth H. Batt
Robert W. Baudoux, Sr.
Harley R. Bauer
R. Edward Baumgardner
Carole C. Baxa
Adelene R. Bay
Josh S. Bayer
Ralph F. Baylor
Bradford E. Beadle
Clara Belle Beale
Clarence A. Beale
Patricia A. Beaton
Verdeen K. Beaver
David W. Bechtel
Charles H. Beck
Anita F. Beggs
Robert M. Belesky
John E. Belle
Benchmark Construction
Company, Inc.
Thomas J. Bender
Paul H. Bennethum
Harold E. Bennett, Jr.
Norman R. Bennett
James O. and Gerda Benson and
Family
Robert P. Benson
Ray M. Bergstresser
David M. Berkowitz
Donald C. Berner
James A. Bernheisel
Gerald C. and Margaret Berry
William H. Bertolet, III
Raymond R. and Jean L. Betz
Errol T. Betzenberger
David A. Bevan
Richard C. Bevington, Jr.
John R. Beyer
Victoria R. Bieber
Harold F. Biehl
William F. Biehl, III
Richard J. Bielicki
Meade G. Bierly
Richard E. Bigley
James A. Bilger, Sr.
Randel Bilger
J. Richard Bishop
Robert D. Bissey, Jr.
William B. Bixler
Stanley S. and Marion J. Black

Mary E. Blackman
Robert W. Blackman
Salvatore Blanco
Matthew J. Blanski
Eric B. Blew
Ralph H. Bley, Jr.
Bucko and Donna Blosinski
Melvin Blumberg
William T. Bohne
Ralph E. Bolinger
Jane Boltz
Madeline E. Bond
Vernon J. Boose
Van G. Booth
Harry and Joan Borie
Carl S. Boselli
Joel G. Bossard
Clarence L. Bosserman, Jr.
Beatrice S. Botterbusch
Bounce Media, LLC
Ellsworth Bowser
Boyd Senior Planning, LTD
John L. Boyer
Edith M. Brachman
Donald J. Bradley
Richard H. Bradley, Jr.
Howard E. Bradshaw
William C. Bradstreet
Robert H. Brain
John C. Brake
Richard E. Brandt
Paul F. Braun
Charles Brecht
Edward W. Brecht
Delight E. Breidegam, Jr.
Matthew H. Breidenthall
Patricia A. Breneman
Emil J. and Gail Brenkus
Raymond M. Brenneman
Ronald E. Brenneman
Robert E. Breuninger
William M. Bridge
Randall D. Bright
Robert H. Bright
Barbara L. Brion
Francis H. Brobst
Harold C. Broomell
Carlton K. Brown
Craig A. and Cheryl L. Brown
Floyd E. Brown
Ralph R. Brown
Robert R. Brown
Roger J. Brown
Ronald W. Brown
William G. Brown
Forrest L. Brubaker
John H. Bruhn

Richard R. Brunner
Joseph and Wendy Bryan
Kay E. Bucci
David C. Buchanan
Ronald Buckwalter
Bernard C. Bunetta
James E. Bunitsky
Roger C. Bunn
John H. Burdakin
Norman A. Burger
Ronald K. and Alice F. Burgess
Jess R. Burns
Karen Burt
Paul E. Bush
Boyd and R. Eileen Butz
Nicholas and Ann Marie Bybel, Jr.
C. Marshall Byre, Jr.
David W. Caddick
William S. Cadzow, Jr.
John E. Calvert
Dennis C. Campagna
Victor P. Campagna
Curtis S. Campbell
Gordon W. Campbell
Russell M. Campbell
Thomas N. Campbell
John E. Campos
James R. Carey
Leonard C. Carey
William J. Carnall
David E. Carnish
Dennis L. Carr
H. Edward and Barbara R. Carr
Richard and Carol Carson
William P. and Judith G. Carson
Harold E. Carter
J. Richard Carter, Jr.
Peter J. Carufe
Robert J. Carwithen
Gilson G. Cash
George J. and Anna M. Cashion
Michael D. Cassidy
William P. Cathers, Jr.
Vincent T. Cavallo
James L. Cebular, Jr.
Randall D. Cellone
Central Penn Nursing
Donald C. Cessna, II
Sarah E. Challenger
John W. Chapman
Martin F. and Caroline Charney
Joseph G. Chefko
Chippewa Township Recreation
Board
Henry C. Chmielefski
George P. Clair, III
Donald F. Clark

James H. Clark
Lee E. Clark, Sr.
Lloyd E. Clark
Murl E. Clark
Richard D. Clark
Geoffrey H. Class
Richard T. Claus
William J. Clayton
Doris M. Clift
Robert E. Clower
David J. Clymer
Warren and Barbara A. Cobb
Dorothy F. Cohen
Edward J. Cohen
William L. Colbert
John L. Cole, Jr.
Sophie R. Collier
Paul L. Colmer
C. Wendell Combs
Frances M. Comly
Gordon A. Comrie, Sr.
Conestoga Title Insurance Co.
Richard E. Conn
William B. Conner
Paul J. Connolly, Jr.
Paul J. Connolly, Sr.
Vernon J. Connor
Gary L. Conrad
Curtis J. Cooke
Nevin D. and Kathleen E. Cooley
John D. and Kathleen G. Cooper
Quentin H. Cooper
Donn Corban
Co-workers of Sheryl Cornell
David F. Corson
Owen J. Costello
Lester A. Cottom, Sr.
Peter W. Coulston, Sr.
Jeffrey W. and Jo Anne Coy
David L. Coyle
Wilson B. Cramer
Richard J. Criqui, Jr.
Richard E. Crosby
Raymond S. Crossan, Jr.
Robert E. Crossan
Susan A. Croumer
James P. Crouse
Duane E. Crumrine
CSX Corporation and CSX Good
Government Fund
William R. and Elsie N. Culp
Andrew S. Cunningham
Lillian J. Cunningham
Marvin A. and Rosalie M.
Cunningham, Sr.
Teddy B. Cunningham
Robert W. Curtis, Sr.
William A. Cuthbert
Jacob E. Dailey
Jacob E. and Mary Ann Dailey
Marianne Dale
Walter R. Dallas

Steven C. Daly
Carolyn F. Daniels
Marlin A. Darr
Edwin F. Davies
Annabel L. Davis
Carl D. Davis
Charles A. Davis
Jean S. Davis
Norman B. Davis
Paul L. Davis
Wesley S. Davis
Fred E. Decker
Joseph M. and Pamela E.
Degliobizzi
Richard L. DeHaven
Joseph T. Dehner, Jr.
Glenn H. Deiter
Donald R. Dell
Richard D. Dellheim
Richard G. DeLong
Arthur L. Delpaz
Sebastian Demanop
Roger W. DeMars
John L. DeReiter
Chester A. Derk, Sr.
Kenneth A. DeShong
William M. Detterer
Donald R. Detwiler, Sr.
Donald Devorris
Mary Grace Di Massa
Jeffrey L. Diegel
Russell Dietrich
Salvatore A. DiGiacomo
David E. and Barbara E. Dilks
Jean L. Dillman
John C. DiMino
Bruce B. Dimmick
David M. Director
Richard H. Disque, II
John D. Dixon
John M. Dolan, III
Becki and Michael Dolhanczyk
Theodore S. Domansky
Richard D. Dombach
Thomas R. Dommel
John J. Donati, Jr.
Robert J. Donmoyer
Musu K. Dorliae
Richard E. Dornblaser
William K. and Bernadine M.
Dorney
Richard C. Dougherty
James R. Doughten
John W. Doughten, Sr.
Eileen J. Douglas
Francis C. Doyle
Wayne R. Dubbs
Robert C. Dudley
John R. Dufford
George H. Dull
Ann G. Duncan and Allan Gould
David R. Duncan

Barry L. Duncker
Thomas Dunlop
Stacy K. Duran
Delores K. Dutil
Richard D. Dymond
Eagle Alliance
East Penn Chapter No. 12 N.C.T.
May E. Eberhart
Jeffrey Eberly
Timothy P. Eberly
William J. Ebertshouser
Catherine E. Ebright
Joseph W. Eby
Norman C. Eckard, Sr.
Donald C. Eckert, Jr.
Donald L. Eckert
Jean V. Eckert
Robert W. and Patricia C. Edge
James H. Edsall
Mary C. Edwards
Mary E. Edwards
Frank W. Eiler
Harry G. Eisenbise
Timothy B. Elek, Jr.
Margaret L. Elliott
Norig Ellison
Robert M. Emberger, Sr.
Robert T. Emery, Sr.
Billy J. Emling
Esther A. Enck
Jay R. Engelbrecht
Robert M. England
John H. Enterline
Charles E. Entrekin
Robert Epps
Ernest R. Erb, Jr.
Elmer Erdely, Jr.
Richard R. Erdley
Leroy C. Erickson, Jr.
John C. Ertel
Jimmie G. Erwin, Jr.
Ricky D. Eschbach
John S. Eshbach
Norma L. Eshelman
Thomas Esper
John F. Espig
Mr. and Mrs. Rudolfo Espinosa
Charles A. Evans
Donald D. Evans
Haydn S. Evans
I. Newton Evans, Jr.
Robert A. Everhart, Jr.
Calvin E. Ewell
Roberta E. Ewing
Walter L. Exline, Jr.
William D. Eyerly, Sr.
Robert J. Fafata
Amy M. Fairand
Marc and Ann Falcinelli
Falmouth Civic Association
Glenn L. Farren
Edwin C. Farrington, Jr.

Donna L. Faub
Donald R. Faulconbridge
Federated Investors Management
Company
Kenneth A. Fegley
Ray E. Feick
Ira M. Feldman
Robert T. Fellows
Jeffrey D. Fenstermacher
Richard J. Fenstermaker
Robert F. Fenstermaker
Harry D. Ferguson
John H. Ferguson
Linda N. Ferguson
Robert R. Ferguson, Jr.
Thomas D. and Linda Ferguson
Brenda Appelgren Ferich
Albert J. Ferry, Jr.
Joseph J. Festa
David T. Fife
James R. Fike
Donald A. Fingerman
Robert E. Fishel
Charles J. Fisher
Mark G. Fisher
Nelson L. Fisher
Robert W. Fitts
John D. Fitzgibbon
Robert L. Flade
Florence E. Fleming
James E. Flemming
Joseph A. Fletcher, Jr.
Robert James Fletcher
Alan L. Flinn
Richard D. Flinn
Francis V. Florentine
John T. Florey
Mary E. Flurie
James F. Flynn
Scott S. Fogle
Jean E. Foley
Fred L. Foller, Jr.
Mark M. Ford
Alma K. Forman
Paul E. Forry, Jr.
Robert E. Fosbenner
Steven Fosbenner
Gary W. Foster
Theodore W. Foust
Conrad J. Fowler
Carl P. and Helen C. Fox
Rodney R. Fox
David A. Frailey
Aden H. Francis
John D. and Jeanne S. Francis
Marlin B. Frankhouse
Albert W. Frederick
Doris Freet
David W. Freudig
Dale F. Frey
Jay R. Frey
Robert M. Frey

Charles J. and Linda Frick, Jr.
Michael S. Frick
Andrew E. Friedrich
Jack R. Fries
Charles H. Fritz
John E. Fullerton, Jr.
William H. Fulton
Albert J. Funke, Jr.
Rollin A. and Jennie Furnas
B. Howard Fyock
Gerald R. Gabel
Alden B. Gable
Dolores D. Gall
Kenneth R. Gall
Matthew W. Gallagher
Joseph J. Gallicchio
Vivian A. Galliford
John C. Gamaldi, III
Charles F. Gamber
Nancy P. Garber
Jesse H. Gardner
Mr. and Mrs. Robert R. Gardner
Timothy E. Garman, Jr.
Charles A. Garnes
Harry Garrett
Richard D. Gathagan
Anthony J. Gatt
Guido G. Gatti
William F. Gay, Sr.
William B. Gaynor
Dennis S. Gazer
Nicholas J. Geers
Kenneth R. Geib
George P. Geiges
Kenneth W. Geiselhart
GEM Group
Donald L. George
Fred C. George
Raphael T. George
Walter K. Gerber
Harry E. Gerhard, Jr.
James P. Gerstenlauer
John E. Geschwindt
Karl D. and Mary Ellen
Geschwindt
Dean M. Gettemy
Francesco Giampa
Gibbs & Cox
Edward C. Gibson, Jr.
Donald W. Giffin
James M. Gilbert, Jr.
Leigh G. Gilbert
Rodney A. Gilbert
Michael D. Gipperich
Robert L. Gitt
Claude E. Gladfelter, Jr.
John J. Glass, Jr.
James O. Gleason
Henry K. Godshall, Jr.
Robert L. Goehring
Charles W. and Dorothy Goffer
Erasmus E. Gonano

Humberto J. and Carol D.
Gonzalez
Dennis A. Good
John R. Gormley
Randal L. Goshert
Randall M. Gotwalt
Mary C. Graefe
Harry C. Grafton, Jr.
Joseph P. Graham, III
Kenneth W. Graham
Robert J. Graham
Thomas D. Graham
Karyn F. Grainger
John C. Grant
Vincent Gravina, III
Anne B. Gray
Keith L. Greenawalt
Curtis J. Greene
Edmund A. Greenidge, Jr.
Jeffrey A. Gregoire
Donald R. Gregory
Randolph A. Gregory
Fred H. and Ingrid B. Greim
Mark R. Grenadier
Donald L. and Joan Grier
Doris A. Griffin
Alan J. Griffith
Bertram E. Griffith, Jr.
Marguerite H. Griffith
Robert J. S. Griffith, Jr.
Charles E. Griffiths, Sr.
John R. Grimm
John W. Gross, Jr.
Christopher M. Grow
Russell W. Grubb
C. Dennis Gruver
Jacques C. Guequierre
James V. Guido
John J. and Joanne Gullifer
E. Garrett Gummer, III
William G. and Linda A.
Gustafson
Russell E. Gustavson
Robert A. Guthrie
Robert L. Haar
Wayne J. Haas
Albert W. Hacke, III
Edward G. Hacke
Nicholas P. Hadgimallis
Charles H. Hafer
James J. Hahn
William L. Hainer
Robert W. Haldeman
Chris Hall
Nicholas Halladay
Dale H. Haller
David E. and Nancy Halliwell
Robert G. Hamilton, Jr.
Frederic S. C. Hamlin
Dennis Hamm
Betty J. Hamman
Dennis J. Hamsher

David T. Handley
Joseph T. Hanes
Carole R. Hankinson
Richard C. Hann
Kenneth E. Hansen
Stanley C. Hanshaw
Lamona G. Harbaugh
Mary A. Harbaugh
Edward R. Harding
Harold A. Hardy, Jr.
Donald J. Harkness
Maynard L. Harring
C. Fred and June H. Harris
Judith A. Harris
Steven and Danielle Harris
Elfrieda M. Hart
Robert L. Hart, Jr.
Harold V. and Caroline J. Hartley
Lamar G. Hartline
Edwin S. Hartman, II
Robert E. Hartman
Thomas W. Hartman
William P. Hartman
June I. Harvey
Kenneth P. Harvey
Robert H. Hashinger, Sr.
Joan L. Hassinger
Ronald W. Hatton, Jr.
Laverne S. and Bonnie L. Hauck
John W. Haught
Havis, Inc.
Matthew R. Hawk
James R. Hawke
Glenn S. Hawkey
Alfred E. Hawthorne
William R. Hawthorne
Mr. and Mrs. Paul W. Haynie
John R. Hays
Charles R. Hazelwood, Jr.
Calvin L. and Betty Heacock
Margaret R. Headland
Benjamin P. Heck
Quintin I. Heckert
James R. Heckman
Warren and Helen Heidelbaugh
John B. Heilman, Jr.
Jeffrey L. Heiss
John P. Held
Todd A. Heller
Danny G. Hellmann
James G. Hellmann
Pearl C. Hemphill
Paul R. Hencel
H. Clayton Henderson
Ronald S. Hendricks
James B. Henkelman
Robert L. Henly
Mary B. Henneman
Don L. and Madeline J. Hennon
Martin E. Herman
James R. Herr, Jr.
Marvin L. Herren, Sr.

Richard B. Hershey
Janice S. Hertel
Earl P. Herting
James T. Heslop, III
Clifton R. Hess
Daniel E. Hess
Paula K. Hess
Homer S. Hetrick, II
Henry J. Hiddleston
Donald B. Hilbert
Thomas C. Hildebrand
William P. Hileman
James A. and Mary L. Hill
Louis H. Hill, Jr.
Matthew E. Hill
Robert L. Hillberry, Jr.
Randy D. Hillegass
Daniel E. Himmelberger
John H. Himmer
Todd L. Hineline
Kirk S. Hinkley, III
Kirk S. Hinkley, Jr.
B. Thomas Hipple
Ross C. Hirst
Elizabeth Hittinger
Gregory A. Hixson
Elwood C. Hocker, Jr.
Brian D. Hoerner
Glenn H. Hoffer
William F. Hoffmeyer
Richard A. Holcombe
David G. Holland
Charles W. Hollenbach
Cynthia B. Hollinger
Donald M. Hollinger
Roy L. Hollinger
David A. Holmes
Martin W. Holmes
Bruce G. Holran
Arthur M. Holst
John F. Holtz and Debra A. Borie-
Holtz
Russell L. Holtzman
Carl D. Homan
Dennis L. Hooper
William B. Hoover
Daniel W. Hopkins
James F. Horan, III
Frederick W. Hotzman, Jr.
Charles E. Hough
Ronald J. Houseknecht
Dale C. Houser
Clifford N. Howard
James and Peggy Howard
Jodi L. Howe
Dennis R. Howell
Mary T. Howell
Lewis L. Hoy
Chris J. Huber, Jr.
Harry G. Huber
Jesse S. Hudson
Charles H. Huettner

Joyce A. Huffert
 Robert J. Hughes
 Ronald G. Hughes
 Ruth L. Hughes
 Stanley S. Hughes
 Barbara J. Hull
 June Hull
 Rudolph A. Hummel
 Hummelstown American Legion
 Auxiliary Unit 265
 Hummelstown American Legion
 Post 265
 Wayne G. Hummer, Jr.
 John W. Hunsberger
 David M. Hunter, Jr.
 N. Robert Hurdle
 Joseph D. Hyde
 Renate A. and Steven R. Hylinski
 Julius F. and Phyllis A. Iacocca
 Illinois Tool Works Foundation
 Imagine Nation Books, LTD
 Fred N. Imler
 Lucy Ingram
 John P. Ippolito
 Harold E. Irwin
 ITW Angleboard
 J. L. Honberger Co., Inc.
 Jack Giambalvo Motor Co.
 Thomas W. Jackson
 Carol L. Jacobson
 Milton F. Jacoby
 Gary L. James
 Jeffrey L. James
 James Smith Dietterick &
 Connelly, LLP
 Joseph G. Janco
 Richard P. Jenkins
 Edward F. John, Jr.
 Irmgard Johns
 Harry F. Johnson
 Horace A. Johnson
 John C. Johnson
 John E. Johnson
 John G. Johnson
 Kenneth W. Johnson
 Louis A. Johnson
 Robert E. Johnson
 Forrest J. Johnston
 Peter D. Johnstone
 Dennis R. Jones
 George G. Jones, Jr.
 Gordon S. Jones
 Kenneth R. Jones
 Lloyd Jones
 Clyde W. and Eva G. Jordan
 John A. Jorgensen
 Mardie M. Juskalian, Jr.
 Peyton F. Justice
 Cloyd L. Kaelin, II
 Stephen G. Kaiser
 Carol A. Kalbach
 Uldis Kalnins
 Gerald F. Kaltenbach
 Barbara A. Kambic
 Thomas and Terry Kamerzel
 Joseph D. Karmetze, Jr.
 David E. Karper
 Paula K. Kauffman
 Paul Kaupe
 Rebecca N. Kausch
 James J. Kavanaugh
 Timothy T. Keagle, Sr.
 Harold L. Keefe
 Robert Keegan, Jr.
 William J. Keeler, Sr.
 Dennis A. Keen, Sr.
 David E. Keeseey
 Franklin H. Kelly
 John C. Kemrer
 Dennis R. Kendig
 Mark G. Kendig
 Jane V. Kennelly
 Greta L. Kenney
 Stephen L. Kenney
 John C. Kern
 Robert L. Kessler
 Shawn J. Kiefer
 Richard L. King, Sr.
 Thomas C. King, Jr.
 Laird C. Kircher
 Lazarus P. Kirifides
 Mark A. Kirsch
 Harold G. Kist
 Jeffrey W. Kitchen
 Donald C. Kivler
 Michael A. Kizis
 Frederick H. Klaiss, Sr.
 Francis B. Klein
 Gilbert Klein
 Linda Kleppinger
 William F. Kline
 Thomas C. Klinefelter
 Arthur Kling, Jr.
 Marvin E. Klinger
 Austin and A. Marlene Klopp
 Brian D. Knapp
 Paul R. Knapp
 Robert B. Knepp
 Robert C. Knepper
 Robert W. Knight, III
 Hargis L. Knoechel
 George J. Knorr
 James E. Knott
 Marjorie Knox
 Roy A. and Abigail M. Knox
 Richard H. Koch
 William A. Koch, III
 Frederick W. Kocher
 Robert Kochersperger, Jr.
 Donald A. Koehler
 Ruth M. Koenig
 Gale M. Koerner
 Doris L. Kohr
 Emery J. Kohut
 Dean E. Koppenhaver
 Garry E. Koppenhaver
 Robert L. Koser
 Richard J. Kottler, Sr.
 James and Margaret K. Kotz
 Marian G. Kovacs
 Joseph W. Kovarick
 John Kozak
 Clair D. Kramer
 Herbert Kramer
 Dallas L. Krapf
 Robert N. Kratz
 Gary G. Kratzer
 Richard D. Krause
 Burnell E. Kreider
 Robert E. Kreider
 J. David Kreiss
 Jay A. Kriska
 Robert J. Krol, Jr.
 Alfred L. Krout
 Edna M. Kruse
 Juergen W. Kruse
 Marlin L. Kruse
 Donald J. Kugle
 John O. Kukitz
 John S. Kula
 Raymond L. Kunkel, Jr.
 Gerald R. Kunsman
 Anthony Kurdilla
 Arthur E. and Jane Kurtz
 Robert F. Kushnereit, Sr.
 Robert E. Kyle
 William R. Laatu
 Theodore M. and Veronica LaBuda
 Curtis C. LaCoe
 Richard E. Ladd
 John M. Lafferty
 Linda L. Lager
 Lakeport Garden Club
 Howard J. Lamade, Jr.
 Jerry V. Lambert
 Lancaster Lodge of Perfection
 Roy M. Landers
 Stanley B. Landis
 Brian P. and Alexis Lanoza
 Frank V. Lantz
 Lee Ann Larson
 James I. Lasher
 Charles R. Latimer
 Mary J. Latz
 Family of Grace E. Laubach
 Walter B. Laubach, Jr.
 George Lauderback, Jr.
 Dorothy E. Lauer
 Harry J. Lauer
 Jerry B. and Anne W. Lauer
 John P. Lazaro
 Arnold H. Lazarus
 Mary Q. Leavitt
 Robert H. Leeper, Jr.
 Jeffrey P. Lees
 Harold R. Leh, Jr.
 Bruce L. Lehman, Jr.
 Lee R. Lehman
 Jeffrey M. Lehmann
 Glenn R. Leiby
 Robert C. Leiby
 Tara Leister
 Charles R. Lelleyo
 Larry S. LeMaster
 Jay F. Leonard
 Joseph J. Leonardo
 John J. B. Lerch, IV
 William G. Lerch
 Marie E. Leshner
 Theodore C. Leventhal
 Richard T. Levis, Jr.
 George V. Lewis, Jr.
 Ivor F. Lewis
 John H. and Carolyn C. Lewis, Jr.
 Melvin W. Lewis
 Jerome W. Lewkowicz
 Barry Lhormer
 Ted D. and Meg Lichtenwalner
 Nancy Liebegott
 Richard R. Lied
 John T. Lindberg
 Barbara Linden
 Gilbert F. and Sarah A. Link
 Don A. Linn
 Kenneth A. Lintelman
 Robert C. Lippy
 Richard L. and Jill I. Lisciandro
 Edward J. Little
 Robert L. Little
 Paavo Liukko
 Lockheed Martin AEHF
 Richard O. Loesel
 Eugene and Jean Logan
 Marlene Logan
 Paul F. Lombardi
 Graig A. Long
 Janicemarie W. Long
 Michael A. Long
 Norman F. Long, Sr.
 Robert I. Long
 Harry and Doris Longenecker
 John D. Longenecker
 Peter and Tracey Lord
 Graydon I. Lose
 Mary Ann Loughin
 Hon. and Mrs. David G. Lowe
 Donald K. Lowe
 Lee L. Lowry
 Louis J. and Mary A. Luberda
 Robert T. Lucas
 William B. Luckenbill
 Ludwig United Methodist Church
 Erich F. and Rita T. Lukas
 Robert J. Luther
 George A. Lutz
 George J. Lutz
 Nathan M. Lutz
 G. Alvin Lynn

Stanley J. Lysek	Richard Robert McElwee	Barry G. Minnicks, Jr.	Gary W. Nickelson
David E. MacIntyre	Howard R. McFarland, Jr.	Dominick Mitchell, Sr.	Frank S. Nicodem
James S. Mackey	Marian McGinnis	Fenton M. Mitchell	Leonard Niesenbaum
Robert Mackison	Austin E. McGrath, Jr.	Robert J. Mitchell	David A. Nimick
Lynne C. MacMath	Francis J. McGuigan	Vincent J. and Carol A. Mitchell	G. Bruce Nixdorf
John A. MacPhail	William B. McIntyre, Jr.	Gary S. Mohler	Robert J. Noel
John C. Magnus	Michael B. McKee	James E. Monson	Barry L. Noll
Richard B. Mahany	Earl W. and Doris McKeever	Robert W. Moore	James C. Nolt
Theresa A. Maher and Echeyde Cubillo	Robert M. McKendrick, Sr.	Russell H. Moore, Jr.	Francis J. and Robin O. Norris
Sharon Maiorana Family	George R. McKinney, III	William D. Moore, Jr.	William M. Norris
Mark R. Major	Frank L. McKitten	Dennis V. Mordan	Gabriel D. Novakovsky
Frank J. Malik	Gregory K. McKnight	Arthur D. Morey	John A. Novobilsky
Thomas J. Malishaucki, Jr.	Frank T. McMaster	Daniel Morgan	Kenneth A. Nygard
Stanley M. and Ginnie Maminski	Harry E. McMinn Jr.	Steve C. Morreale	Louis G. and Rose M. O'Brien
Daniel Mandich	Thomas W. McMullen	James W. Morris	Debra J. O'Connel
Bernard Mann	John J. McNey	James A. Morrison	James A. O'Connor
Lloyd E. Manter	Donald L. Meck, Sr.	Richard R. Mort	Edward J. Oerman
Kirby and Barb Marchand	Michael J. Medykowski	Bill and Grace Morton	Wayne B. Ohl
Edwin O. Margerum	J. Franklin Meehan	George W. Morton	Reginald J. Ohlson
Alphonse M. Margiotta	Jayne K. Meischker	Paul G. Mosch	Barry and Joan Olanoff
H. Martin and Theo C. Marietta	Henry C. Meiss, III	Harry A. Moseley, Jr.	James A. Oliver
Clifford K. Mark	Joseph S. Meizen	David T. Moser	Glenn W. Olsen
George S. Mark, Jr.	Timothy J. Melcher	Lester L. Moser, Sr.	Omega Delta Psi Sorority
Robert S. Markley	Dennis R. Meleshenko	Joan Moss	Ernest L. Opfer
Milan J. Markovich	William M. Menaker	Raymond B. Moyer, Jr.	John E. Orfetel, Sr.
Leland L. Marsh	Dwayne and Barbara Mercer	Sidney C. Moyer	Scott M. Orris
William W. Marshall, Jr.	Thomas M. and Carol A. Mercer	William R. Moyer, Jr.	Orthovita, Inc.
Althea N. Martin	Mercers	William S. Moyer	James P. Osborne, Sr.
David B. Martin	Donald W. Meredith	Christian R. Mueller	Marianne O. Ostendorf
David J. Martin	David L. and W. Joyce Merkel	Ralph F. Mueller, Jr.	George H. Ostermayer
James J. Martin	Donald L. Mershimer	Joan Muffler	David C. Otto
George D. Mason	Ralph D. Mertz	Sandra L. Muffley	Michael D. Overbeck
Joseph Michael Massey	Frank P. Messerschmidt, III	Miles W. Muir	Kenneth P. Overly
Ronald A. Massott	Robert S. Metcalfe	Robert Mulgrew	Harry L. Oyler, Sr.
Truman E. Mast	Margaret P. Methlie	Muncie Power Products, Inc.	Michael G. Oyler
James E. Matisko	Louise B. Metka	Howard L. Mundorf	Mark A. and Eileen Pagano
Robert L. Matthews, Jr.	George Metroka	Mutual of America	Michael D. Pagotto
Helen Mattson	Michael J. Metzger	Jerry A. Myers	Helyn J. Pague
John D. Matyasich	Twila J. Meyers	Joyce Myers-Brown	Arthur M. Painter, Jr.
Michael P. Maugans	Michael T. Midkiff	Ronald E. Nace	G. Marie Painter
Albert L. Maxson	John T. Miles	Gail L. Nagie	Paul S. Painter
Kenneth S. Mayall	Albert B. Miller, Sr.	George Nakonetschny	William D. Painter
James D. Mayer	Alice R. Miller	Frank and Joanne Naples	Arnold D. Palmer
Walter G. McBlain, Jr.	Anna H. Miller	Dennis R. and Barbara Narehood	Thomas J. Palmer, Sr.
Melinda McCabe	Bruce C. Miller	James A. Nassif	Peter F. and Robin J. Pancari
William M. McCain	Dennis C. Miller	National Camping Travelers - Penn West Chapter No. 23	Scott A. Park
Brian R. McCandless	Donald E. Miller	National Steel Car Marketing & Sales Team	Earl M. Parker, Jr.
Leroy E. McCarthy	Glenn L. Miller	Bonita L. Nauman	William Parker, Jr.
Edward B. and Marjorie McCartney	Glenn L. and Jane M. Miller	Alan D. Naylor	Robert H. Parkinson
Elizabeth S. McClain	Jeanne L. Miller	Mr. and Mrs. Thomas H. Neal, Jr.	Kenneth A. Parlee
Raymond D. McCleary	Kenneth W. Miller	William A. Needs, Sr.	Harry T. Parson, Jr.
John F. McCombs	Richard F. Miller, Jr.	Lester G. Nefferdorf	William W. Partridge, Jr.
John F. McConnell	Rodrick L. Miller	Matthew J. Negro	Joseph E. Pascucci
David A. McCormick	Thomas Q. Miller	Clark B. Neibar	Harry P. Passmore, Jr.
Jack E. and Noreen M. McCracken	Vaughn E. Miller	Howard E. Neiss	Donald W. Patrick
Marjorie A. McCracken	Richard B. Millham, Sr.	Dale R. Nelson, Sr.	Frank R. Patterson
Mark McCulley	Judith A. Millhouse	Roger E. Nelson, Jr.	William R. Patterson
Calvin S. McCutcheon	Mark S. Mills	William G. Nelson	Betty Patton
Carolyn R. McElroy	Walter E. and Diane Mills	David B. Nemec	Jon E. Pauley
	Michael A. Mineo	Ronald E. Nickel	William H. Peck
	Calvin W. Minnick		Rudolph Pellegrini
	Frank Minnick		Ronald D. Pennebaker

Jose J. Pereira
 Chester Perfetto
 Preston R. Perkey, Sr.
 Paul M. Perlstein
 Earl H. Peters
 George W. and Doris B. Peters
 Ralph E. Peters
 Patricia A. Petherbridge
 Adam Petrovich
 Thomas W. Pfahler, Jr.
 Pfizer Foundation
 Christopher W. Pheil
 Daniel A. Phillips
 Duane I. Phillips
 James H. Phillips, Sr.
 Randy G. Phipps
 Pilgrim Chapter, Order of
 DeMolay
 Alden D. Pinkerton
 Joseph and Patricia A. Pinto
 Nancy Piper
 Thomas E. Plank
 Mr. and Mrs. Robert I. Player
 Robert E. and Geraldine Pletcher
 William B. Plossl
 Mr. and Mrs. Ted J. Plott
 Anne M. Plusch
 Gary R. Polsinelli
 Harold L. Pomraning
 H. Marshall Pomroy
 Stanley E. Pope
 William H. Port
 William B. Potts
 Frederick C. Powell
 Robert W. Powers
 Evelyn E. Preiksats
 Athanasios A. Pritsios
 Clinton S. Probst
 William A. Prosser
 PSECU
 Ralph E. Purpur
 Quittie Woods, Inc.
 William D. Radle
 John F. and Marybeth W. Raidy
 Robert J. Rambo
 Donald E. Ramp
 Barry S. Ramper, II
 W. Chester Ramsay III
 George T. Rauch
 Duane D. Rausch
 James A. and Sandra Rawle III
 Richard H. Ray, Jr.
 Robert R. and Lana R. Raybold
 Glenn H. Raymer
 Mark S. Rayne
 William J. Reaghard
 Victor J. Reale
 Richard B. and Nancy C. Reaney
 Duane C. Redline
 Harold F. Reed, Jr.
 James D. Reed
 Josiah F. Reed, Jr.

Karl F. Reed
 Samuel J. Reed
 Thomas R. Reed
 Harold R. Reeser
 Richard R. Reeves, Jr.
 Troy M. Regan
 Timothy R. Reichard
 Kenneth A. Reigle, Jr.
 Ruth L. Reigle
 Richard A. Reisert
 Ray M. Reiss, Jr.
 Robert F. Remaley
 Donald J. Renn
 Charlotte A. and Ken Renninger
 Robert A. Renninger
 Ronald R. Renshaw
 Residents of Smith South
 Retirement Living Men's Chorus
 Herbert W. Reynolds
 Jay R. Reynolds
 Robert A. and Virginia Reynolds
 Family and Friends of Jean Rhein
 Betty M. Rhoads
 Sharan Rhodes
 Nancy S. Rice
 William H. Rice, Jr.
 Mr. and Mrs. Herman S. Richard
 Robert R. Richards, Sr.
 Jesse P. Richardson, Jr.
 John E. Richardson
 Jack B. and Ruthann Richey
 John E. Ries
 Gregory A. Rightnour
 Clarence and Cynthia Riley
 Thomas R. and Deborah K. Riley
 Eileen F. Rind
 J. Wesley Rineer
 Jack D. Ringer
 Milton A. Ripple
 Gerald H. Risser
 Bonita Y. Rissmiller
 Michael J. Rittenhouse
 Robert E. Roan
 Alfred S. Roberts
 David G. Roberts, Jr.
 Eugene L. Roberts
 Raymond A. Robey
 Dennis L. Robinson
 Donna Robinson
 John M. Robinson, Jr.
 Donald E. Rogers
 James C. Rogers, Jr.
 Michael F. Rogers
 John S. Rohrer
 James and Charlotte Romberger
 Donald C. Roseth
 Erdean B. Ross
 John S. and Kathleen Kelley Ross, Jr.
 Joseph L. Ross
 David P. Roth
 Robert L. Rotter
 Trent M. Rotz

James D. and Dorothy A. Rouke
 Philip D. Rowe, Jr.
 Arthur and Shirley Rowley
 Ellis L. Rubin
 Seymour Rubin
 Vernon E. Rudolph
 Ronald W. Rudy
 John E. Rusnack, Jr.
 Jane B. Russell
 Ronald B. Ruth
 Albert G. Rutherford, II
 Lynda G. Sahli
 Richard B. Salomon
 Harvey I. and Jean M. Salwen
 Betty H. Sargen
 David Sarraf
 Lance W. Savidge
 Kenneth W. Savitski
 Charles W. and Phyllis Schaeffer
 Allen C. Schafer
 David H. Schaper
 George B. Scheerbaum
 Elwood G. Schell
 Mark Scheneman
 William F. Schieber
 Albert G. Schisler
 Kenneth W. Schlecht
 William L. Schlegel
 James W. Schleiden
 Otto R. Schmid
 Eric L. Schmidt
 Carl F. Schmoyer, Jr.
 Dennis K. and Janice L. Schmuck
 Kenneth G. Schnabel
 George R. Schollhamer
 Martin G. Schreiber
 Frank J. Schriffert
 Paul S. Schriener
 Joseph A. Schrock, Jr.
 Madeline M. and Gerald R.
 Schuldt
 John H. Schulte
 Richard D. Schwager
 Timothy L. Schwambach
 Saul M. Schwartz
 Robert B. Schweigert
 Harry E. Schweinsberg
 Beverly Schweitzer
 Charles F. Schwender
 James E. Scott, Sr.
 John L. Scott, III
 Dennis W. Scullion
 Edwin R. Seace, Sr.
 Gerard R. Sealy
 Curtis C. Seaman
 Kay M. Seamans
 Mark L. Sedlemeyer
 Jane W. Segmiller
 Randolph Seitter
 John O. Seitz, III
 John J. Seitzinger
 Daryl L. Seldomridge

Shirley R. Seldomridge
 Harry T. Sell
 Delbert E. Sellers
 Peter M. Serokis
 David and Lynda Setton
 Seubert & Associates, Inc.
 Forrest L. Shadle
 Seth B. Shafer
 Dennis F. and Patricia Shaffer
 John R. Shaffer
 Sarah J. Shaffer
 Paul N. Shank
 Benjamin B. Shankroff
 Marvin and Gertrude Shapiro
 Joseph G. Sharp
 Keith E. Sharp
 Clair E. Shatto, Jr.
 Mary H. Shaud
 Todd R. Shearer
 Douglas L. Sheldon
 Austin L. Shellenberger
 Bruce D. Shellenberger
 Judith A. Shelley
 Harry C. Shenk, Jr.
 Owen F. Sheppard, Jr.
 Christian E. Sherman
 Richard D. Sherr
 Douglas R. Shetron
 Sandra Stark Shields
 Karl A. Shilliff
 Frederick M. Shilling, Jr.
 Charles E. Shiner
 David R. Shingle, Jr.
 Glenn M. Shirey
 Bobby E. Shirk
 Robert M. Shope
 Joan E. Short
 John H. and Twila E. Shreffler
 Helen M. Shumaker
 Mr. and Mrs. John W. Shupe
 Rosemary Shymowsky
 Sigrid Sieberer
 Christian L. Siebert, Jr.
 Thomas C. Sigler
 Julia L. Siipple
 George E. Silvers
 James R. Silvius
 Joseph O. Simington
 George R. Simms
 Ronald C. Simon
 Ronald L. and Sharon Simons
 Raymond A. Simpson, Jr.
 John R. and Sally Sinclair
 Sheila M. Singer
 Thomas D. Singer
 Delbert L. Skinner
 Douglas E. and Janice A. Skinner
 Fern E. Skinner
 Peter Sklikas
 William Skumanich
 Robert C. Sleighter
 Brendan J. Smith, Sr.

Edward Smith, Jr.
Jay V. Smith
John C. Smith
Lance A. Smith
Larry W. Smith
Mildred D. Smith
Paul L. Smith
Paul R. Smith
Richard A. Smith
Richard C. Smith
Ronald M. Smith
S. Berne Smith
Scott A. Smith
Donald L. Smithgall
Michael D. Smoluk
William L. Smouse
Chester C. Snavely, Jr.
T. Richard Snedden
William F. Snider
Charles J. Snyder, Jr.
Erma A. Snyder
James F. Snyder
Shirley A. Snyder
Robert J. Sobers
Jon S. Solheim
Sons of the American Legion
Squadron 594
Furman South, III
Edgar A. Soyke
Tim W. Spahr
Brian M. Spaid
Richard J. Spangler
Laurence Spector
Marvin G. Speicher
Randall W. Spriggle
Donald L. Stahl
Stanley P. Stahl
Gary B. Stahley
Clinton J. Starkey
Albert M. Starner
Edwin J. Starosta
Mary J. Stauffer
Nellie D. Staver
Steadman Law
Peter M. Steeb
Florence C. Steigerwalt
Edward R. Stein
Norman F. Stein
Gerald Z. Steinberg
John F. and Lillian E. Steiner
Michael L. Stempka
Edward W. Stenger
William T. Stephens
Margaret E. Stetler
Bruce W. Stevens
Calvin W. Stevens
James E. Stevenson, III
Scott A. Stevenson
William C. Stever
Charles E. Stewart
Francis D. Stillman, Jr.
Robert K. Stine

Richard C. Stinsman
John Stipanovich, Jr.
George and Nancy Stockburger, IV
Paul O. Stoey
Carl F. Stoltz
Thomas W. Stone
Ronald M. Stoof
Eric C. Stormfels
Mr. and Mrs. William S. Stout
Paul R. Straw
William A. Strimple, Jr.
Floyd K. String
James A. Strite, III
Charles A. Strosnider
Frederick L. Stroup
Charles L. Strouphar, Sr.
Hans L. Strube
Helen P. Strunk
Bradley W. Stull
Dale R. Stump
James D. Stuncard, Jr.
Claude L. Sturtevant
Donald C. Stutzman
David H. Summerville, Sr.
Joel L. Sundholm
Paul B. Surloff
Sweet Ovations, LLC
Donald L. Swope
Samuel M. and Dianna M. Taggart
John A. Talbitzer, Jr.
Tall Cedar and White Rose Clown
Club
Tall Cedars of Lebanon
Craig C. Talley
Heinz G. Taubenberger
J. Robert Taylor
Richard E. Taylor
Russell H. Taylor
Thomas E. Taylor
William R. Taylor, Jr.
Percy D. Teaford, Jr.
Carl S. Teets, Jr.
Franklin A. Terry
Richard S. Thatcher
The Cementworks, LLC
The Glenmede Corporation,
Matching Gifts Program
The Special Singles
William W. Them
Brent M. Theobald
Albert L. Thomas, Jr.
Carolyn A. Thomas
Eugene R. Thomas, Jr.
Harold D. Thomas, Jr.
James H. Thomas
Phyllis J. Thomas
William A. Thomas
James B. Thompson, Sr.
James M. Thompson
William A. Thorpe
Marian J. Tichy
Nancy A. Tiley

Raymond E. Tisot
Robert H. Todd
James L. Tollinger
John C. Tondora
Doris Toomey
Thomas F. Toscani
Richard W. Toward
Andrew P. Townsend
James L. Townsend
John F. Traboscia
Richard C. Traugh
Johnny E. Tressler
Gary N. Trivelpiece
Guy C. Troutman
Terry P. Troxell
Earl P. Trygar, Sr.
John W. Tschudy
Samuel J. Turn
Danny L. Turner
Larry E. Tweedt
Edward V. Twigg, II
U. S. Family Foundation, Inc.
Terry M. Uhl
George W. Ullrich
Jay L. Ulmer
Darlyn D. Unger
Raymond W. Unger
United Way of Delaware
Upper Frederick Township
George and Martha Vaeth
Roger C. Vandermark
Joseph I. Vasile
Arthur R. Vaughn, III
Robert W. Vaughn
Francis A. Vicente
Vicki & Bob Dolan Fund-
Foundation for Enhancing
Communities
Anthony F. and Delores D. Vitas
William J. Vohs
Mark F. Volz
George M. Von Nieda
Thomas J. Von Nieda
Peter A. Vranka
W. W. Gay Mechanical
Contractor, Inc.
Fredrick M. Waara
Betty W. Waetjen
George H. Wagner, Jr.
Susan E. Wagner
Mr. and Mrs. Willlliam F. Wagner
Wayne P. and Renee A. Wagoner
Miles O. Walborn
Thomas W. Walker
Alice Wallace
John A. Walter
Richard E. Walters
Donald R. Waltz
Lillian P. Wanner
Glenn W. Warfel
Philip A. Washington
Caryl T. Waters

Barry V. Watson
David H. Watson
James D. Watson
Robert P. Watson
Junior M. Waybright
Ellen N. Weaver
Frederick W. Weber
Robert A. Weber
Robert T. Weed
Miriam P. Wege
James M. Wehar
Delton L. Weigle
I. Raymond Weigle
N. Bruce Weir
Herman J. Weiser, Jr.
JoAnn B. Weiss
Richard E. Weitzel
Carol Welconish
Nathan L. Welshans
Wayne P. Welshans
Barry E. Wenger
Glenn T. Wenger
Noah W. Wenger
Hans-Erik Wennberg
Robert W. Wentzel, Sr.
David J. Wenzel
Robert E. Werner
Russell C. Wert
William L. Wesner
Frank H. West
Norman E. West
Western Pennsylvania Preceptory
Harry L. and Peggy Wheeler
Leon V. Whipple
Joel J. Whitcomb
Gerald White
Timothy T. White
Baltis and Ruth Whiteman
Walter R. Whiteman
David and Pamela Whitenack
Larry G. Whitmoyer
Ruth L. Whitney
Ann A. Wildasin
Charles L. Wilde, III
Harry J. Wiley
William C. Wilkes
Benjamin K. Williams, Jr.
Bruce J. Williams
Dean A. Williams
George L. Williams
S. Joan Williams
David J. Williamson
Stephen J. Williamson
Mildred C. Wilson
W. Donald Wilson
Richard G. Winston
Joseph O. Wintersteen
Patsy I. Wire
Michael V. Wise
Richard Wise
Richard E. Wise, Jr.
Peter Wisnosky

Donald E. Wissinger
 Robert A. and Michele D. Witmyer
 Edwin P. Wolf
 Eleanor L. Wolf
 Elmer E. Wolf
 J. Earl Wolf
 William T. Wolf
 William F. Wolfe
 Carol A. Wolfinger
 John D. Wolford
 David W. Woodhead
 Clark W. Wooding
 John E. Woodling
 Barry L. Woods
 Gerald L. Woolcock
 George B. Worrell
 Roy E. Worthly
 R. Richard Wright, Jr.
 Joseph P. Wrigley
 Garson W. Wunderlich, III
 Charles J. Wyberg
 Richard E. Wyckoff
 J. Kenneth Wyse
 Carolyn A. Yankoski
 Mark A. Yanoski
 Ellis L. Yingling
 George R. Yoder, Jr.
 Kail M. Yohey
 Donald L. Yost
 Lester D. Young
 Wallace H. Young
 William F. Young, Jr.
 Luther A. Zarfoss, II
 John J. Zaun, Jr.
 David E. Zazworsky
 Marty and Christina Zeamer
 Andrew S. Zelez
 Thomas R. and Helen B. Zern
 Richard A. Zick
 John P. Zickler
 Allen S. Zimmerman
 C. Dennis Zimmerman
 George W. Zimmerman
 Guy K. Zimmerman
 James J. Zimmerman
 Paul H. Zimmerman
 Thomas F. Zimmerman
 Charles H. Zinn
 Dennis M. Zubler
 Richard Zucckero
 Robert A. Zupanovich

Carolyn Ann Aston
 W. Allen Babel
 Donald O. Bachman
 Stephen C. Baker
 Charles V. Balmer
 Ralph and Anna Barisci
 Arlan D. Barkman
 Thomas A. Barrow
 John F. Beard
 William P. Beard, Jr.
 Jerry R. Beavon
 Mr. and Mrs. James R. Beckwith
 Hugh F. Beddow
 Willis K. Bennett
 Harold F. Bernhardt, Jr.
 Allan I. Binder
 Eugene W. and Julianne Bitchko
 Gloria A. Bohner
 Herbert M. Bohner
 Robert S. Bolinger
 Steve Bomgardner
 Alfred M. and Beulah M. Bonilla
 James F. and Anne Bonner
 James H. and Jane M. Bonsall
 H. William Brady
 Donald L. Brainerd
 Richard E. Brandt
 Paul P. Bricknell
 Donald R. Brindisi
 Dennis J. Brown
 Sarah H. Brown
 Richard H. and Jean Brumbach
 John K. Brunner
 Helen Bunitsky-Ulary and Gerry
 Goode
 Bransby W. Bushey
 Harold G. Byer
 David E. Cale
 Albert G. Cederstrom, Jr.
 Nicholas and Colleen Cemprola
 Chevron Corporation
 Alethea M. Cloud
 Jacob B. Colburn
 William Collier
 Conneaut Valley Masonic Hall
 Association
 William B. Cook
 William A. Corcoran
 Elsie R. Corlett
 Charles B. Correnti
 Robert F. Cosgriff
 William A. Cranston, Jr.
 John H. Crilley
 Stephen C. Croasdale
 Richard J. Cudd
 Charles E. and Carol C. Curry
 M. Lillian Curtiss
 John M. Daniels
 William C. and Nancy H. Davidson
 Robert W. Davies
 Henry C. Davis
 William C. Davis

Marjorie B. Derbyshire
 Kristofer W. Dewberry
 John Ditzler
 Donegal Area High Twelve Club
 No. 686
 Joan M. Doran
 J. Allan Downing
 Toni L. Drabant
 Francis X. and Barbara J. Dufner
 Gerald E. Duvall
 Russell W. Dyke
 Perry S. Ecksel
 Frank E. Ehrenfeld, Jr.
 Arthur S. Ellis
 Robert C. Enders
 Donald B. Engle
 Mark J. Enie
 Edwin B. Erickson, III
 Richard E. Eshbach
 Nancy J. Evans
 Donald B. and Thalia Evons
 Susan M. Ewing
 Patricia A. Eyster
 Kenneth H. Faust
 P. Thomas Feeser
 Jacob H. Fehl, Jr.
 George W. Fishel, Jr.
 Joseph M. Fisher
 Raymond W. Fisher
 Charles B. and Sarah Foulkrod
 Oscar Fox
 Patrick J. Foy
 Michael J. Frailey
 Evelyn M. Free
 William D. French
 Paul W. Frick
 John R. and Sara J. Fry
 Charles D. Fullmer
 Harold C. Gabler, Jr.
 Catherine G. Gardner
 Mary N. Gardner
 Kenneth C. Gertney
 Richard T. Gheer
 Alice E. Gibney
 William M. Glose, III
 Marge Goode
 Norman Gough
 William H. Green, Jr.
 Michael G. Greenawalt
 Glen R. Grell
 Mary Jane Greusel
 Corinne Griffiths
 Charles L. Haeussler, II
 Mark A. Haines
 Ernestine Halikman
 Harry S. Hart, Jr.
 John D. Heile
 William R. Hemperly, Jr.
 Edgar H. Hendler
 Mary B. Henneman
 Glenn W. Henry
 Benjamin P. Herman

Margaret M. Hershberger
 William F. Hertz
 Judith A. Hess
 Gordon E. Hickman
 Craig S. Hicks
 Thomas F. Higgins
 William T. Hill
 Glenn D. Himes, Sr.
 Donald L. Hines
 Charles W. and Janet A. Hobday
 Burton E. Hofer
 James F. Hollingshead
 Charles Holloway
 Bryan M. Hoover
 Thomas I. Host
 Lucille Hough
 Eugene R. Hughes
 Carl K. Hutchison
 Patsy A. Inners
 Billy J. Izzo
 Michael E. Jaspan
 Carl F. Jaymes
 Michael J. Jenkins
 John G. Eshleman Memorial
 Charity Fund
 William and Shirley Johnston
 Doris K. Kahmar
 Edward C. Kasten, Sr.
 Arthur S. Keinert
 Richard N. Kellenberger
 Mr. and Mrs. Donald H. Keller
 Robert M. King
 Richard L. Knoebel
 Russell J. Kolmus, Jr.
 Millard L. Kroh, II
 William E. Kuebler
 Arthur J. Kurtz
 Samuel E. Kurtz
 Patricia A. Kwiatkowski
 Barry Michael Ladd
 George F. Lance
 Earl W. Laney
 David C. Larned, Jr.
 Linda B. Latschar
 Charles A. Laubach, Jr.
 Lemuel R. Lawson
 Preston J. and Anna M. Layfield
 Harold W. Leas
 Donald A. Lechleitner
 Stephen C. Leer
 Ralph A. Lehman
 Jess A. Leidig, III
 Alvin L. Leisey, Jr.
 James L. Leonard
 Scott and Kristy Levy
 Gene O. and Frances R. Light
 David Lizzi, Sr.
 Stephen W. Long
 Edmund S. Ludwig
 Ronald L. Lundquist
 William G. and Angeline MacIntire
 Richard F. Maffett

Level Club

\$250-499.99

45th Masonic School of Instruction
 Anonymous
 Mark B. Aaron
 Alfred R. Adkins, Sr.
 Paul J. Aigeldinger
 Donald L. Albert
 Elizabeth B. Allyn
 Richard W. and Linda J. Armbrust

Richard E. Mampe
Kirk C. Manchester
Marvin Mandel
James R. Mann, Jr.
Joseph C. and Elizabeth S.
Manzinger
Alan A. Marfin
Earl B. Markley
Donald and Phoebe Marti
Elizabeth A. Martin
William J. Martin
John E. Martinson, II
Wayne C. Mattern
Robert H. McCague
Abram J. McClune
Donald W. McCune
Samuel L. McElheny
Thomas E. McFate
Joseph E. McIntyre, Sr.
Ronald A. and Judy A. McKnight
Gene E. McMillen
Jeffrey S. Meade
Robert J. Menzie, Sr.
Edward M. and Jeanne Messner
Jean T. Messner
Dale W. and Margaret R. Miller
George D. Miller
Mr. and Mrs. Jeffrey R. Miller
George Montgomery
Thomas G. Moore, Jr.
Donald B. Morgan
Frederick E. Muller, Jr.
Emory C. Mullins, Jr.
Janice T. Murphey
Robert W. Murray
Michael D. Needy
William E. Nelson
Clair W. Noll
Shirley Noske
Thomas L. and Margaret E. Oakey
William R. Oberholtzer
Benjamin Olewine, III
Richard E. and Sylvia E. Parks
Dennis K. Plasha, Sr.
Marlin Plymette
Thomas O. Pratt
Eugene A. Pretnicki
Edith M. Raup
Mary S. Reader
George W. Reider
Dorothy E. Reifsnnyder
William M. Reilly
E. Ross Reynolds
Jeffrey C. Rhein
Wendy Riggall
Clair E. Ritter
Larry G. Ritter
Gabriela Sanchis
Esther L. Scheuermann
Arthur R. Schisler
F. Dale Schoeneman
Benjamin A. and Krista Schoener

William C. and Nancy A.
Schreffler
Gerald R. Schuldt
Arthur C. Schwotzer
Evelyn Seekamp
Frederic V. Shaefter
Gary L. Sharp
Barbara E. Shields
Joseph C. Skasko
William Slater II
Donald E. Smith
James G. Smith
Oscar F. Smith, IV
Steven Smolenak
Erica C. Sopp
Southampton Square Club
Dana H. Spriggs
Robert D. Springer
William R. Staplin, Jr.
Richard L. Stare
Vance E. Steadman
Robert S. Stein
Ernest Steinmeyer
William J. and Patricia Stephens
William C. Stevenson, Sr.
Granville S. Strachan, Jr.
Franklin H. Strouse
Supreme Forest T.C.L.
Troy L. Teal
Brian E. Teaman
The Merck Company Foundation
Harry C. and Carolyn A. Thomas
Ronald and Dorthea Thomason
Ralph and Roseann Thompson
Merrill C. Thrush
Edwin S. Topper
Edward E. Tourje
Robert M. and Kay Troxell
John J. Tumolo, Jr.
Kenneth W. VanSickle
John T. Vanyo
Raymond A. Vaughan
John Via
Mary Emily Vint
Craig L. Wagman
Alexander J. Waldman
William H. Walter
Elvin M. and Leatrice A. Warner, Jr.
Wilbur R. Weaver
Charles and Doris Werner
Thomas M. and Geraldine M.
Werner
Harold J. Whartnaby
Robert W. Wheeler
Robert W. White, Jr.
Walter A. Wickey
Dean L. Williams
Janice V. Williams
Marjorie E. Williams
Thomas R. Williams
John N. and Mary Ellen Wilson
John S. Wilson

Thomas A. Wilson
John E. Wolgemuth
Harry A. Woods
Robert V. Yanssens
William L. Yarnall
Alan B. Yeakel
Korey R. Young
Jacob F. Zimmers, Jr.

Square and Compass Club

\$500-999.99

30th Masonic District
15th Masonic District School of
Instruction
Anonymous
Edward N. Allen
Edward C. Anderson
Marie Virginia Andrews
Nancy L. Armitage
Carroll S. Arnold
Donald T. Beecher
William E. Berman
James M. Berry, Sr.
John V. Berry
Charlotte M. Betz
Michael P. Bimle
Jane Binley
Mary L. Bishop
Lewis A. Blum
Wallace Brower, Jr.
Austin C. Brown, Jr.
J. Kenneth Brubaker
Robert A. Bull
Kenneth E. Burkholder
Daniel G. Cairns
Mary E. Calvert
Carlyon Charitable Trust Fund
Donald Lee Carmichael
Gregory S. Caskey
Castle Asphalt & Construction,
LLC
Comcast Corporation
Compunetix, Inc., Communications
Systems Division
Dieter G. Dauber
John R. Davidson
Dorothy C. Davis
Hilda Deibert
Frederick G. and Jean Dent
Mark J. and Nancy J. Deputy
Mr. and Mrs. Chester A. Derk, Jr.
Eugenia N. Devens
Nancy M. Dick
William H. Dickey, Jr.
Edward E. and Darlene M.
Donnald
Albert Dove
Gary L. and Carol Andrea
Dukeman
Eaton Vance Management
Lawrence R. Ebersole
Robert L. Eckbreth

Mark W. Eifert
William G. Elliott
Doris D. Engles
Margery B. H. English
Erich Gumto Greenhouses, Inc.
Joseph E. Fair
Howard C. Faust
Kenneth G. Fessler
William S. and Judy Fisher
Timothy Fitzpatrick
William L. Frankhouser
John L. Friant
Henry R. and Martha Gally
Wayne M. Garafola
Margaret F. Giannetti
Family of June Gibson
Gilroy and Lillian Roberts
Charitable Foundation
Robert C. Glunt
Doris M. Gotsch
W. Douglas Gouge
Grand Council of Royal and
Select Master Masons
Grand Guardian Council of
Pennsylvania, IOJD
Grand Holy Royal Arch Chapter
of Pennsylvania
Helen D. Gregg
Charles W. Grimm
Owen H. Groff, Jr.
Merle B. Growden
Elaine W. Hammer
Kenneth R. and Marie L. Harms
Paul R. Heckman
George E. Heinly, Jr.
Duane P. Hepler
S. Richard Hillegas
Scott R. Hilsee
Mr. and Mrs. Fredrick H.
Hoffmann
Robert L. Holliday
H. Leonard Holmquist, Jr.
Howell Royal Arch Chapter
No. 202
IBM Employee Services Center
Karen M. Jehanian
Leroy A. Johnson, Jr.
Lyle D. Johnson
William T. Johnson
John M. Josephson
William H. and Judith A.
Kauffman, Jr.
William J. Kelly, III
Anna L. Kendig
Nancy A. Kimberlin
Richard J. and Susan C. Kirk
William H. Kraemer
Patricia Lebegern
Roger M. Lewis
Ernest E. Lingle
Howard R. Lloyd, Sr. and
Margaret Rohnacher

Elliott H. Loden
 Richard J. Lower
 Lu Lu Shrine Legion of Honor
 Ann M. Lucas
 Elona A. MacMath
 Donald E. March
 Gregg D. McBride, Jr.
 William L. McCarrier
 James R. McDaniel, Sr.
 Norwood A. McDaniel, Sr.
 David J. and Deborah McIlhenny
 Keith A. McKnight
 Donald A. McMillan
 Richard L. McMinn
 Virginia McMullan
 Albert C. Menger, III
 Joyce F. Michelfelder
 Microsoft Matching Gift Program
 John E. and Barbara J. Milcoff
 and Family
 Dean R. and Brenda L. Miller
 Earl E. Miller
 Elaine M. Miller
 Milliman
 Albert R. Minnich
 Paul Mitchell, Jr.
 George R. Moad
 Roland B. Morris, Sr.
 Francis K. Moyer
 Mary A. Murphy
 Mona S. Murray
 Jay D. Myers
 Sarah B. Nace
 Jane M. Newcomer
 Leonard C. and Mary C. Newman
 Nan R. Norris
 Joseph B. O'Connor
 Chris T. O'Donnell
 PA Assoc. of High Twelve Clubs
 2013 Convention
 Pennsylvania DeMolay
 Keith C. Pipes
 Betty A. Platt
 William J. and Kathy W. Prazenica
 Robert P. Randall
 John R. and Louise E. Rapp
 Paul E. Reichart
 Mr. and Mrs. Fred Rice
 Archibald J. Robinson, Jr.
 Jenny L. Rodger
 James R. Rodisch
 Ruth A. Rowley
 C. Vernon Sanders
 John S. Savickas
 Richard I. Schaeffer
 Arthur J. Schlemmer
 E. Doris Schmidt
 Joan Seiders
 Herbert S. Shear
 Henry H. and Kay Sheetz
 J. Jack Sherman
 Richard H. Shertzer

Elvin F. Silvius
 Charles L. Smith
 Susan F. Smith
 Charles J. Snader, Jr.
 Joseph M. Sobeski
 Phyllis E. Speicher
 Ernest A. Stanger
 Steven N. Stitzer
 Helen A. Stone
 Superior Credit Union
 Walter L. Sykes
 Temple-Melita Royal Arch
 Chapter No. 183
 Richard C. Trimble
 Edmund A. Turnbull
 William H. Underwood, III
 Barry W. Van Rensler
 Donald A. Wagner
 Frank M. Walter
 John W. Wells, II
 Arthur and Dorothy Wert
 Carl E. and Neda Mae Wert
 Harry B. West
 Robert E. Wetzel
 Don M. White
 Gary A. Whitehead
 Barbara D. Williams
 Warren W. Wilson
 Lois H. Witmer
 Harold H. Young
 YourCause, LLC / Hewlett-
 Packard Company Match
 Roland E. Yunginger
 Charles M. Zell

**Deputy Grand Master's
 Jewel Society
 \$1,000-2,999**

60th Masonic District
 5th Masonic District School of
 Instruction
 17th Masonic District School of
 Instruction
 Anonymous
 Anonymous Employee
 John E. Adams, Jr.
 David E. Albrecht
 Paul E. Allen
 Anthony and Linda Ambrose
 Suzanne E. Anderson
 Avox Technologies
 Gerald and Rose Ann Baer
 Raymond W. and Lois E. Barber
 Joseph M. Barnes
 Rita H. Barty
 Benjamin Franklin Consistory 32nd
 Degree, A.A.S.R.
 Edward H. and Patricia D. Bisbee
 Robert S. Blum
 Thomas L. and Rebecca Boone
 Donald E. Bower
 Stuart L. and Barbara G. Brown

Buckingham, LLC
 Harold and Jill Bucks
 Dorothy R. Carpenter
 Robert R. Carthew
 Robert G. Cathcart, Jr.
 CDS Masonic Fund, Inc.
 Richard H. Cherry
 Constance R. Cherry-Jackson
 David Child
 Christenson Investment Partners
 Larry R. Christenson
 Henry A. Clay
 Nancy M. Cline
 Louise H. Cook
 Maureen Cornell
 Carla L. Cox
 David Cranmer
 Kenneth Curtiss
 CWP Industries, Inc.
 Monika Daley
 Ralph C. Davis
 William C. and Susan Davis, Jr.
 Joan M. Dellinger
 Raymond J. DeRaymond
 Jonathan B. Detwiler
 Wayne L. and Mary Dietrich
 Diversified Corporate Security LLC
 William J. Doyle
 Galen E. Dreibelbis
 Duquesne Commandery 72 KT
 Joseph E. Ebersole
 William L. Emick, Jr.
 Robert L. Engel
 Craig L. Erdman
 Joel L. Farwell
 Benjamin G. Fay
 John H. Fey
 Carl R. and Arlene Flohr
 Alfred E. Flowers
 Robert C. and Marilyn Forney
 Norman A. Fox
 Fraser Advanced Information
 Systems
 William L. Frederick, Sr.
 Raymond T. George
 Carol Glass
 Loraine G. Glidden
 Fred H. Goldblatt
 Larry V. Goodling
 William F. and Anna B. Gottschalk
 Grand Court Order of the
 Amaranth
 Grand Master Charity Golf
 David E. Gratz
 Marian L. Greenawalt
 Robert B. Greer, III
 Benjamin F. and Kathleen Griscom
 Marion W. Grochowski
 John A. and Patricia S. Grubb
 Leland A. Hale, Jr.
 Happy Hour Group
 Peter H. Heberer

Gordon E. and Roberta Hensel
 Sterling P. and Joanne Hepler
 Herbert Groskin Foundation
 Doris A. Herr
 Joel H. Hersh
 Eugene W. and Jacqueline Hieber
 Hildebrandt Learning Center
 Leonard and Gladys Hill
 Deane W. Hillegass
 John P. Himes
 James A. and Doralice P. Hinton,
 CRUT
 Robert P. and Linda Hoffines
 Daniel R. Hoffman
 George H. Hohenschildt
 David L. Hollinger
 J. Larry and Joanne Hollinger
 Eleanor P. Homisak
 E. Dale Hornberger
 Norma M. Hoster
 Bruce E. Howarth
 Jeffrey and Nancy Hoyt
 Ina R. Jacobs
 J. Charles Johnson
 James A. and Barbara Kehl
 John W. and Mary A. Keister, Jr.
 Richard E. and Jo Ann K. Keller
 Kathryn E. Kelley
 Gerald and Patricia Kemmerer
 Kennedy Capital Management
 Frederick F. and Marjorie B. Kepner
 Dorothy R. Kern
 Keystone Eagles Club of
 Pennsylvania
 Raymond H. Kiefer
 C. Wilson and Patricia D. Kile, Jr.
 Blanche I. Kinch
 Mary J. Knox
 Frederick N. and Theresa T.
 Koehler
 John A. and Geraldine Kook
 Baird P. and Marion H. Krecker
 Joan W. Kuch
 William L. Kunkel
 Glenn R. and Barbara J.
 Kurzenknabe
 Charles R. Lefever
 Paul A. Leitzel
 Paul D. Lesser
 Julia E. Linn
 Harry C. Luebbe, Jr.
 James H. Maguire
 Horace L. and Prudence P. Mann
 Judy and Larry Marcus
 Harry M. Markley
 Ned A. and Phyllis B. Masenheimer
 Masonic Village & Elizabethtown
 Model Railroad Club
 Masonic Village Art Association
 Masonic Village at Sewickley
 Retirement Living Association
 Masonic Village Piece Makers Quilt
 Club

Masonic Village Travel Club
Masonic Villages of the Grand Lodge
of Pennsylvania
Lisa M. McBride
Lois V. McDevitt
Dale E. McDonald
George F. McGrory
Harry O. McMullen
Betty W. McMurtrie
Martha McNutt
George P. and A. Lucille Meissner
Donald E. Menear
Kenneth L. and Audrey M. Menke
Florence Y. Methlie
Metro Bank
Donald C. Meyers
Virginia K. Migrala
George E. Miller
Larry D. and Carol Miller
Linda L. Miller
Louis D. Miller
Tracy H. Miller, III
John W. Milroy, Jr.
William A. Moisey
Montgomery, McCracken, Walker
& Rhoads, LLP
David L. Moore
Walter L. Moore, Jr.
G. Edward and Rowena H.
Morelock
Alvin L. Morton
Most Worshipful Prince Hall
W. Scott Muller
Richard F. Muth
Roger A. Nickol
Clyde L. Noel
Myrl K. Noggle
Doris M. Novinger
Louis A. Nyiri
Robert C. Oberman, Jr.
Douglas L. Orre
Pa. Retired School Teachers
Nancy J. Parke
Perkins - T.P. Trailers, Inc.
Fern B. Raff Pfister
PJM Interconnection
Robert S. and Alice S. Pinnock
Robert A. Poxon
Raytech U.S.A., Inc.
Family of John S. (Jack) Reese
James L. Ressler
Carroll E. Rickert
Stephen Rituper, Jr.
Raymond G. and Sheila C. Roeder
M. Jean Rowan
Daniel A. Rutkowski
William M. Ryan
Gregory M. Schaeffer
Donald E. Schmick
Herbert A. Schmidt
Bruce B. Schoenfeld
John E. Schreadley

A. Henry Schwab
Karren E. Scott
W. James Senseman Family
Shelly's Medication Services
Eleanor A. Shumaker
Michael A. Sienkiewicz
Matthew L. Silfies
Ralph E. and Linda A. Simpson
David and Veronica Sims
B. Jane Smith
Blanche D. Smith
Donald T. Sowden
Samuel W. Spanos
Thomas M. St. Clair
Jane and William Staman
James L. Steely
Thomas C. and Claudia J. Stephens
Phyllis E. Stevens
Audrey S. Stroup
Susquehanna Bancshares, Inc.
Clifford S. and Beverly A. Sweigart
Carl L. Swope
Catherine M. Taylor
Merrill F. Taylor
Edward A. Tessaro
The Breidegam Family Foundation
The Hayes Foundation
The Jonas Daniel and Helen Laura
Moyer Fund
The Oxford Area Foundation
Raymond E. and Annette M.
Tierney
Nick and Madeline Tisak
C. DeForrest Trexler
Ruth E. Turpin
A. Preston and Brenda L.
Van Deursen
Debra J. Vanek
Warfel Construction Company
Edward O. Weisser
Joanne D. Westafer
Roger L. and Susan J. Wheeler
Peggy Whittington
William Slater II Master Mason's
Club
Nelson M. Williams
Samuel C. Williamson
Carl J. and Carol D. Willis
W. William and Roxie L. Winkler
Irvin Witmer, Jr.
Carol L. Wolf
Jeffrey M. Wonderling
William E. Zinkel

**Grand Master's Jewel Society
\$3,000 and above**
Anonymous
Walter Balliet
Charles A. Baltzer
Martin H. and Gabriele M. Bayer
Robert I. Becker
Jane H. Bird

Kenneth W. and Elaine K. Bleiler
Robert J. and Marianne E. Bowman
Robert R. Breinig
Clarence A. Brockman
Jay G. Brossman and Sarah Kinzey
Carter Properties
Causeway Capital
Charles T. and Carol E. Chew
Norman M. and Sarah K. Clark
Edith M. Cook
George H. Cox
Mason A. and Joy Crawford
H. Lawrence and Wendy Culp, Jr.
Mary Dearden
Jean A. Diffenderfer
Robert C. Duckett
Roland E. Dunkelberger
Robert R. and Helen A. Edwards, Sr.
Ruth H. Eissler
E. Lillian Fausnacht
Hilbert S. Felton, Jr.
Donna Fernback
Vicki Gillmore
Robert T. Girling
Norman G. and Ruth M.
Gladfelter, Jr.
Gourgas Lodge of Perfection - The
Valley of Pittsburgh A. A. S. R.
Anne K. Gratz
Harvey E. and Carol P. Gumto
James H. Heidler
Judi Hindes
Richard A. Holt
Evelyn Hunter-Longdon
Carl Jordan
Kelly Charitable Remainder
Annuity Trust
Mary Anne Klemkosky
Jack Koehler
William R. Letcher
Richard E. Lloyd
James W. and Kitty A. Maiden
Masonic Charity Golf Tournament
- East
Masonic Homes Patton School
Alumni Association
L.F. McArthur
Mill Creek Capital Advisors, LLC
Harry A. Minehart
Joseph E. and Barbara A. Murphy
Myer S. Shandelman Trust
William E. Myers
Ronald L. Nicarry
Orrstown Bank
Phillips Facilities Management
Group
Preis Family
RLPS Architects
Eleanor S. Rankin
Richard M. Reber
Retirement Living Craft Group

Retirement Living Residents'
Association
Julian A. Richter, Sr.
Thomas H. Robertson
Richard A. Rodibaugh
Rooster's Woodworking Shop
Joanna B. Sadler
Frederick P. and Mary Jane Sample
Bruce Sauers
Terry L. and Lori A. Seiders
Richard E. and Mary Ellen K.
Sheesley
Sloan's Pharmacy, Inc.
Jay W. and Nancy E. Smith
Ivan R. Snyder
Floyd R. and Carolyn G. Sowers
James W. Stark
Mary L. Stock
James E. and Mary Ellen Tarman
Robert F. and Joan K. Terwilliger
The Henry E. Haller, Jr. Foundation
Theodore R. & Lillian S. Helmbold
Fund of the Pittsburgh Foundation
Titanium Asset Management
George L. and Joan D. Turns, Jr.
Robert E. and Joyce Umbaugh
Stanley L. and Arlene S. Von Nieda
Joseph J. Wable
Allen E. and Nancy E. Wenrich
James T. and Bette K. Wenrich
James S. and Arlene S. Wentle
Lee N. Whitaker, Sr.
Widows Sons Masonic Riders
William E. C. and Mary Dearden
Foundation
Larry J. and Carol S. Wolford
Frank P. and Joyce E. Wolyniec, Jr.
Donald S. Wood
Walter H. and Carolyn M. Wright
D. Richard and Barbara Zell
Simon L. Zimmerman

Lodges \$100-249.99

Arcana Lodge No. 580
Ellwood Lodge No. 599
Eureka Lodge No. 366
Hebron Lodge No. 575
Hobah Lodge No. 276
Hyndman Lodge No. 589
Indiana - Franklin Lodge No. 313
James W. Brown Lodge No. 675
Kennett Square Lodge No. 475
King David Lodge No. 763
Kingsbury Lodge No. 466
Kingston Lodge No. 395
Lake Lodge No. 434
Landmark Lodge No. 442
Myrtle Lodge No. 316
New Bethlehem Lodge No. 522
North Star Lodge No. 241
Parian Lodge No. 662
Shamokin Lodge No. 255

Somerset Lodge No. 358
Steelton-Swatara Lodge No. 775

Lodges \$250-499.99

Apollo Lodge No. 437
Barger Lodge No. 325
Brownstone Lodge No. 666
Butler Lodge No. 272
Christiana Lodge No. 417
Eureka Lodge No. 290
Frackville Lodge No. 737
Henry M. Phillips Lodge No. 337
John A. Brashear Lodge No. 743
Joseph Warren Lodge No. 726
Juniata Lodge No. 282
La Monte Lodge No. 568
Lewistown Lodge No. 203
Mahanoy City Lodge No. 357
Manheim Lodge No. 587
Mount Zion Lodge No. 774
Nanticoke Lodge No. 332
Northern Star Lodge No. 555
Parker City-Allegheny Valley Lodge No. 521
Sharpsville Lodge No. 517
Stillwater Lodge No. 547
Union Lodge No. 334
Valley Lodge No. 499
Victory Lodge No. 694
Waverly Lodge No. 301
Widener-Apollo-Kensington Lodge No. 211

Lodges \$500-999.99

Acacia Lodge No. 579
Adelphic Lodge No. 424
Bradford Lodge No. 749
Brownsville Lodge No. 60
Carbondale Lodge No. 249
Charleroi Lodge No. 615
Corry Lodge No. 365
Crawford Lodge No. 234
Doric Lodge No. 630
Eulalia Lodge No. 342
Everett Lodge No. 524
Fairless Hills - Levittown Lodge No. 776
Fidelity Lodge No. 655
Freedom Lodge No. 328
Friendship Lodge No. 663
Green Ridge Lodge No. 597
Greenleaf Lodge No. 561
Hamilton Day Lodge No. 814
Harmony Lodge No. 429
Hebron Lodge No. 465
Howell Lodge No. 405
Isaac Hiester Lodge No. 660
John W. Jenks Lodge No. 534
Kiskiminetas Lodge No. 617
Lamberton Lodge No. 476
Liberty Lodge No. 505
Lodge No. 22

Lodge No. 45
McKean Lodge No. 388
Milford Lodge No. 344
Moosic Lodge No. 664
Mount Hermon Lodge No. 472
Mount Moriah Lodge No. 300
Mount Union Lodge No. 688
North East Lodge No. 399
Oasis Lodge No. 416
Olive Temple Lodge No. 557
Patmos Lodge No. 348
Petrolia Lodge No. 363
Pleasant Hills-Guthrie Lodge No. 509
Salem Lodge No. 330
Susquehanna Lodge No. 364
Trojan Lodge No. 306
Tyrone Lodge No. 494
Union Lodge No. 108
Union Lodge No. 324
Western Star Lodge No. 304
Williamson Lodge No. 431
Wyoming Lodge No. 468

Lodges \$1,000 and above

Anonymous
Abraham C. Treichler Lodge No. 682
Acacia Lodge No. 586
Adams Lodge No. 319
Alt Heidelberg Lodge No. 821
Arbutus Lodge No. 611
Armstrong Lodge No. 239
Ashara - Casiphia Lodge No. 551
Ashlar Lodge No. 570
Athelstan-Lamberton Lodge No. 482
Avalon Lodge No. 657
Beallsville Lodge No. 237
Bedford Lodge No. 320
Bellefonte Lodge No. 268
Bethlehem Lodge No. 283
Big Spring Lodge No. 361
Blyth Lodge No. 593
Boyertown Lodge No. 741
Brandywine Goddard Lodge No. 383
Bristol Lodge No. 25
Cambria Lodge No. 278
Canton Lodge No. 415
Carbon Lodge No. 242
Cassia-Mount Horeb Lodge No. 273
Chandler Lodge No. 227
Chapman Lodge No. 637
Charity Lodge No. 190
Charles M. Howell Lodge No. 496
Chartiers Lodge No. 297
Chester Lodge No. 236
Claysville Lodge No. 447
Clearfield Lodge No. 314
Columbia Lodge No. 91
Columbia Lodge No. 286

Community Lodge No. 744
Concord Lodge No. 625
Concordia Lodge No. 67
Coraopolis Lodge No. 674
Corinthian Lodge No. 573
Cromwell Lodge No. 572
Cumberland Star Lodge No. 197
Cumberland Valley Lodge No. 315
Dallas Lodge No. 231
Dallas-Lafayette Lodge No. 396
Dietrick Lamade Lodge No. 755
Doylestown Lodge No. 245
Duquesne - McKeesport Lodge No. 731
Easton Lodge No. 152
Emmaus Lodge No. 792
Ephrata Lodge No. 665
Equity Lodge No. 591
Eureka Lodge No. 335
Eureka Lodge No. 404
Eureka-West Shore Lodge No. 302
Factoryville Lodge No. 341
Fayette Lodge No. 228
Fernwood Lodge No. 543
Frankford Lodge No. 292
Franklin Lodge No. 263
Franklin St. John's Trinity Lodge No. 221
Friendship-Williams Lodge No. 400
Fritz Lodge No. 308
General James Chambers Lodge No. 801
George Bartram - Paul Sand Lodge No. 298
George M. Dallas Lodge No. 531
George Washington Lodge No. 143
Glasgow Lodge No. 485
Good Samaritan Lodge No. 336
Greater Johnstown Lodge No. 538
H. Stanley Goodwin Lodge No. 648
Hackenburg Mount Moriah Lodge No. 19
Harford Lodge No. 445
Harrisburg Lodge No. 629
Harry A. Houseman Lodge No. 717
Hazle Azalea Fellowship Lodge No. 327
Herndon Lodge No. 702
Hiram Lodge No. 81
Homestead-Amity Lodge No. 582
Honesdale Lodge No. 218
Huguenot Lodge No. 377
Infinity Lodge No. 546
Ivy Lodge No. 397
James Cochran Lodge No. 614
Jeannette Lodge No. 750
Jerusalem Lodge No. 506
John E. Mair Lodge No. 729
John F. Laedlein Lodge No. 707
Jordan-Martin Lodge No. 673
Joseph H. Brown Lodge No. 751
Kedron Lodge No. 389
King Solomon's Lodge No. 346
Kittanning East Brady Lodge No. 244
La Belle Vallee Lodge No. 232
Lafayette Lodge No. 194
LaFayette Lodge No. 199
Lake Erie Lodge No. 347
Lansdowne Lodge No. 711
Laurel Lodge No. 467
Laurel Lodge No. 651
Lehigh Lodge No. 326
Lehigh Valley Day Lodge No. 813
Lehighon Lodge No. 621
Ligonier Lodge No. 331
Lodge No. 2
Lodge No. 9
Lodge No. 43
Lodge No. 61
Lodge No. 62
Lodge No. 106
Lodge No. 408
Logan Lodge No. 490
Lowther Manor Lodge No. 781
Loyalhanna Lodge No. 275
MacCalla Lodge No. 596
Manoquesy Lodge No. 413
Marion Lodge No. 562
McKinley Stuckrath Lodge No. 318
McVeytown Lodge No. 376
Melita Lodge No. 295
Meyersdale Lodge No. 554
Middleburg Lodge No. 619
Mifflinburg Lodge No. 370
Milnor Lodge No. 287
Milton Lodge No. 256
Moscow Lodge No. 504
Mount Pickering Lodge No. 446
Mount Pisgah Lodge No. 443
Mozart Lodge No. 436
Mt. Lebanon Lodge No. 226
Muncy Lodge No. 299
New London Lodge No. 545
New Temple Lodge No. 720
Newport Lodge No. 381
Newtown Lodge No. 427
Nicholson Lodge No. 438
Noble Lodge No. 480
Norristown Lodge No. 620
North Hills Lodge No. 716
Oakdale Lodge No. 669
Old Fort Lodge No. 537
Oriental Lodge No. 460
Orrstown Lodge No. 262
Osceola Lodge No. 515
Ossea Lodge No. 317
Oxford Lodge No. 353
Palestine-Roxborough Lodge No. 135
Pen Argyll Lodge No. 594
Penn Lodge No. 709
Perkiomen Lodge No. 595
Perry Lodge No. 458

Perry-Ionic Lodge No. 796
 Perry-Keystone Lodge No. 392
 Perseverance Lodge No. 21
 Peter Williamson Lodge No. 323
 Philadelphia-Potter Lodge No. 72
 Philanthropy Lodge No. 225
 Phoenix Lodge No. 75
 Pilgrim Lodge No. 712
 Pine Lodge No. 498
 Plum Creek-Monroeville Lodge
 No. 799
 Pocono Lodge No. 780
 Porter Lodge No. 284
 Portland Lodge No. 311
 Prince Edwin-Spring Creek Lodge
 No. 486
 Prospect Lodge No. 578
 Prosperity Lodge No. 567
 Quakertown Lodge No. 152
 Reading Lodge No. 549
 Red Lion Lodge No. 649
 Richard Vaux-Ivanhoe Lodge
 No. 384
 Richmond Lodge No. 230
 Riverside Lodge No. 503
 Robert Burns Lodge No. 464
 Rochester Lodge No. 229
 Roman Lodge No. 418
 Royersford Lodge No. 585
 Saucon Lodge No. 469
 Schiller Lodge No. 345
 Schuylkill Lodge No. 138

Seneca Lodge No. 805
 Sharon Lodge No. 598
 Shekinah Lodge No. 246
 Shidle Lodge No. 601
 Shiloh Lodge No. 558
 Shrewsbury Lodge No. 423
 Skerrett Lodge No. 343
 Slatington Lodge No. 440
 Solomon's Lodge No. 3
 South Hills Lodge No. 761
 Southampton-Radiant Star Lodge
 No. 806
 Spring City Lodge No. 553
 Springfield-Hanby Lodge No. 767
 St. Alban Lodge No. 529
 St. John's Lodge No. 115
 St. John's Lodge No. 233
 St. John's Lodge No. 260
 St. John's Lodge No. 435
 State College Lodge No. 700
 Stephen Bayard Lodge No. 526
 Stichter Lodge No. 254
 Summit Lodge No. 312
 Sunset Lodge No. 623
 Tacony Lodge No. 600
 Tamaqua Lodge No. 238
 Tennis Lodge No. 371
 Teutonia Lodge No. 367
 Thomas R. Patton Lodge No. 659
 Thomson Lodge No. 340
 Tri-County Lodge No. 252
 Tyrian Lodge No. 644

Union Lodge No. 479
 University Lodge No. 51
 Valley Lodge No. 459
 Valley Lodge No. 797
 Vaux Lodge No. 406
 Verona Lodge No. 548
 W. K. Bray Lodge No. 410
 Warren Lodge No. 240
 Warren Lodge No. 310
 Washington Lodge No. 59
 Washington Lodge No. 164
 Watsontown Lodge No. 401
 Waymart Lodge No. 542
 West Chester Lodge No. 322
 Westmoreland Lodge No. 518
 White Rose Lodge No. 706
 Whitfield Lodge No. 622
 William L. Elkins Lodge No. 271
 William Penn Harmony Lodge
 No. 52
 William S. Snyder Lodge No. 756
 Williamson Lodge No. 307
 Williamson Lodge No. 309
 Williamson-Corinthian Lodge
 No. 368
 Wilson-Joppa Lodge No. 714
 Woodlawn Lodge No. 672
 York Lodge No. 266
 Youghioghenny Lodge No. 583
 Zeredatha Lodge No. 451

**Order of the Eastern Star
 Chapters \$100-249.99**
 119th Session of the Grand
 Chapter of PA, O.E.S.
 Anna L. Windolph Chapter
 No. 495, O.E.S.
 District Deputy Grand Matrons
 2005 - 2006 O.E.S.
 Freeland Chapter No. 323, O.E.S.
 Friendship Chapter No. 551, O.E.S.

Chapters \$250-499.99
 120th Session of the Grand
 Chapter of PA, O.E.S.
 Bird Chapter No. 460, O.E.S.

Chapters \$500-999.99
 Delaware County Home
 Auxiliary, O.E.S.

Chapters \$1,000 and above
 Grand Chapter of Pennsylvania,
 Order of Eastern Star, Inc.
 James Buchanan Chapter No. 315,
 O.E.S.

HONORARIUMS

Listed are honorarium gifts of \$100 or more made in honor of one individual (name shown in blue).

Barbara E. Adams

Harold J. and Jill Bucks

Admin. Director of

Retirement Living and Staff

John R. Rapp

All care givers at Masonic

Village at Warminster

Francis X. and Barbara J.
 Dufner

Louise M. Bachman

William B. McIntyre, Jr.

Robert Bateman

Benjamin Franklin Consistory
 32nd Degree, A.A.S.R.

Mr. and Mrs. Greg Berry

Gerald C. and Margaret Berry

Ishwer L. Bharwani

Steadman Law

Adam W. Bolinger

Ralph E. Bolinger

Richard H. Bradbury

Rodney A. Gilbert

Wallace Brower

Wallace Brower, Jr.

David Caddick

Masonic Charity Golf
 Tournament - East

Richard H. Cherry

Constance R. Cherry-Jackson

Children and Grandchildren

D. Richard and Barbara Zell

Children's Home

Junior M. Waybright

Clarence J. Cox

Carla L. Cox

Gary Davis

Donald A. McMillan

DeMolay

Ellis C. L. Adams

Chester A. Derk, Sr.

Mr. and Mrs. Chester A. Derk, Jr.

Eastern Star

Anna H. Miller

George L. Ebener

Ronald L. and Sharon Simons

Kay Ellen Fair

Joseph E. Fair

Family

John A. Bartle, Sr.

Family

Gerald and Patricia Kemmerer

Michael J. Febbo

Whitfield Lodge No. 622

Mark David Gall

Dolores D. Gall

Catherine G. Gardner

Robert R. Gardner

Gary George

Nancy Hoyt and Joyce
 Clayberger

David L. Gerstenlauer

James P. Gerstenlauer

Great Grandchildren

Ronald K. Burgess

Neil Hamovitz

Paul R. Heckman

Sarah and Claire Hartinger

Roger L. Wheeler

Helen Heidelbaugh

Richard H. Shertzer

Sidney S. Hersh

Joel H. Hersh

Paul W. Hess

Judith A. Hess

George Hohenschildt

Pilgrim Chapter, Order of
 DeMolay

Richard A. Holt

Mr. and Mrs. H. Lawrence
 Culp, Jr.

Hospice Staff

Francis X. and Barbara J.
 Dufner

Carol and Neal Hurley and Family

Marian McGinnis

Taylor Jefferson

Roger L. Wheeler

Jerusalem Lodge No. 506

David J. Williamson

Rhonda M. Johnson Harold J. and Jill Bucks	Caleb and Cohen Miller Robert P. and Linda Hoffines	Albert Roll John A. Novobilsky	Clyde C. Stine Harold J. and Jill Bucks
George Kanoff Lowther Manor Lodge No. 781	George E. Miller Debra J. O'Connel	Adeline B. Savickas John S. Savickas	Thomas K. Sturgeon Harrisburg Lodge No. 629
Robert S. Kohl Granville S. Strachan, Jr.	Jill D. Morris Roland B. Morris	William M. Sayres Wendy Riggall	Rowena Surloff Paul B. Surloff
Thomas R. Labagh Perry S. Ecksel	Mount Pisgah Lodge No. 443 Ronald L. Nicarry	Gilda Sayres Wendy Riggall	Lois S. Sykes Walter L. Sykes
Lansdowne Lodge No. 711 Valley Lodge No. 797	W. Scott Muller Richard A. Zick	Luke Shorty Kristofer W. Dewberry	Robert G. Sykes Walter L. Sykes
Albert C. Menger, III	Joseph E. Murphy William Slater II Master	Miriam Showalter Jean A. Diffenderfer	USS Spangenberg DE223 Larry J. and Carol S. Wolford
Barry W. Littleford Richard H. Disque, II	Mason's Club	Alice U. Shaffer Simoneau Dennis F. Shaffer	Deborah Valiton-Carnish David E. Carnish
Kim Marvel Florence C. Steigerwalt	Clair W. Noll Allen E. and Nancy Wenrich	Jay W. Smith Excelsior Mark Lodge No. 216	A. Preston Van Deursen The Special Singles
Masonic Children's Home	William and Bette Norris Mark J. and Nancy J. Deputy	Excelsior Mark Lodge No. 216 Pennsylvania DeMolay	Elvin M. Warner Elvin M. Warner, Jr.
100th Anniversary Lee Ann Larson	Hugh McAlister North Columbia Lodge No. 286	Michael A. Sienkiewicz	Todd K. Wilkins Dean M. Gettemy
Virginia K. Migrala	Parents Roger C. Vandermark	Samuel H. Snyder Superior Credit Union	Florence E. Willis William J. Reaghard
Rooster's Woodworking Shop	Pauley Family Jon E. Pauley	Eugene Soble Gilroy and Lillian P. Charitable	Carl J. and Carol D. Willis
Masonic Village at	Physical Therapy Department N. Robert Hurdle	Foundation	Anna Mary Young Microsoft Matching Gift
Elizabethtown Pharmacy Donald R. Brindisi	Robert E. Pickel, Jr. National Steel Car Marketing	Our Sons Harry C. Thomas	Program
Masonic Village at	& Sales Team	Catherine H. Spangenberg Larry J. and Carol S. Wolford	Leonard C. and Mary C.
Elizabethtown Social Workers Harry C. and Carolyn Thomas	Kathy Plansin Mary J. Knox	Marvin G. Speicher Randall D. Bright	Newman
Masonic Village Health Care	Robert S. Ray Richard H. Ray, Jr.	Staff of the Masonic Health	William E. Young Florence Y. Methlie
Center Staff Jack E. McCracken	Mildred O. Reilly Robert W. and Patricia C. Edge	Center John R. Rapp	
Masonic Villages Employees Chris T. O'Donnell	Syl and Gladys Rittenhouse William C. and Susan Davis, Jr.	Staff on Roosevelt 2 W. Scott Muller	
Gregg D. McBride Lisa M. McBride		William T. Staman Paul A. Leitzel	
Rosemary Merwin Margaret F. Giannetti			
Virginia K. Migrala David W. Woodhead			

MEMORIAL GIFTS

Listed are memorial gifts of \$100 or more made in memory of one individual (name shown in blue).

Alvin J. Aaron Mark B. Aaron	John P. Anuscavage, Sr. Jacob E. Dailey	Ashley, Granddaughter of Bill and Bette Norris Masonic Village Travel Club	Donald P. Barber Butler Lodge No. 272
Edward N. Allen Carl E. and Neda Mae Wert	Jacob E. and Mary Ann Dailey	Alberta B. Attick Roy A. and Abigail M. Knox	C. Donald Barbush Mark A. and Eileen Pagano
George H. Allen, II William C. Allen	Robert R. and Lana R. Raybold	Pheobe J. Babel W. Allen Babel	Audrey Bashore Robert M. Bashore, Jr.
Mary Ellen Allen Craig A. and Cheryl L. Brown	A. Preston and Brenda L. Van Deursen	Harriet Z. Bachman Allen S. Zimmerman	Evelyn N. Baumgardner Doris A. Griffin
Peter J. Carufe	Edward J. Appलगren Brenda Appelgren Ferich	Lynn S. Balmer Charles V. Balmer	Clarence A. Beale Clara Belle Beale
Amy M. Fairand	Emma S. Argue Joyce A. Huffert	William W. Baltzer Elizabeth R. Baltzer	Lewis F. Beard John F. Beard
Martin G. Schreiber	Francis W. Armitage Nancy L. Armitage	Betty L. Bamberger Ronald L. Bamberger	G. Ronald Beaton Patricia A. Beaton
Henry J. (Hank) Allyn Elizabeth B. Allyn	Edward Arnold, Sr. Edward Arnold, Jr.	Thomas M. and Geraldine M. Werner	Erla M. Beddow Hugh F. Beddow
Dorothea M. Amsbaugh Donald W. Patrick	Gaylord N. Arnst Paul E. Allen		William R. Beers, Sr. Nancy M. Dick
Catherine A. Anstine Roland C. Anstine	Alfred Asheuer Alfred M. Asheuer		

Joseph W. Beggs
Anita F. Beggs

Dorothy C. Beible
Jack Giambalvo Motor Co.

Terry D. Bentzel
Patricia A. Eyster

Edward C. Biehl, Sr.
Harold F. Biehl

Leo A. Bimle
Michael P. Bimle
Federated Investors Management Company

Edward V. Bishop, Jr.
Mary L. Bishop
Barbara Linden

Albert L. Blackman
Mary E. Blackman

Helen M. Bohne
William T. Bohne

Herbert M. Bohner
Lee E. Clark, Sr.

Errol Q. Bond
Madeline E. Bond

Merlin Dean Bordner
Jodi L. Howe
ITW Angleboard
Scott A. Smith
Sons of the American Legion Squadron 594
W. W. Gay Mechanical Contractor, Inc.

Yvonne E. Bosserman
Clarence L. Bosserman, Jr.

Frederick E. Botterbusch
Beatrice S. Botterbusch

Clyde S. and Edna Mae Bower
Donald E. Bower

Anne L. Bowles
Bonita L. Nauman

Richard M. Bowman
Robert H. Todd

Matthew P. Boyd
Edward M. and Jeanne Messner

Harold Boyer, Jr.
Carroll S. Arnold

Horace H. Brachman
Edith M. Brachman

R. Keith Bradley
Richard H. Bradley, Jr.

Gilbert F. Brandon
Brian E. Teaman

Frank and Ruth Brandon
Brian E. Teaman

Merial and Irwin Brenner
Linda B. Latschar

Patricia Brindisi
Donald R. Brindisi

Harry L. Brinton
Donald L. Mershimer

Larry A. Brion
Barbara L. Brion

David Austin Brown
Austin C. Brown, Jr.

Fredrick R. Brown
Carlton K. Brown

Helen M. Brown
Robert R. Brown

Laura Mae Brown
Austin C. Brown, Jr.

Paul N. Brubaker
J. Kenneth Brubaker
Donald L. Hines

David C. Bryan
Richard E. Brandt

Edward T. Bryant
Avox Technologies

Mary E. Bucks
Harold J. and Jill Bucks

Victor A. Caddick
David W. Caddick

Christopher N. Campos
John E. Campos

Anna E. Carpenter
Alice Wallace

Ellen Ruth Cavallo
Vincent T. Cavallo

Leonard E. Cavender
James E. Bunitsky
Helen Bunitsky-Ulary

Mary Ann Cavender
Helen Bunitsky-Ulary and Gerry Goode

James D. Challenger
Sarah E. Challenger

Theresa Cherry
Richard H. Cherry
Constance R. Cherry-Jackson

Maxwell S. Chipman
William M. Glose, III

George P. Clair, Jr.
Stephen C. Croasdale

Howard A. Clark
James H. Clark

Samuel K. Clark
Donald F. Clark

Class of 2013 Angels
A. Preston and Brenda L. Van Deursen

Mary and Charles Class
Richard J. and Susan C. Kirk

Robert S. Clift, Sr.
Doris M. Clift

Robert T. Clough
Dale H. Haller

Kitty Coe
Warren and Helen Heidelbaugh

Frank Cole
George A. Lutz

Harold S. Cook
Louise H. Cook

Joseph G. Cook
Edith M. Cook

Frederick Cornell
Maureen Cornell

Margaret E. Cornell
Co-workers of Sheryl Cornell
Ann G. Duncan and Alan Gould

Peggy Correnti
Charles B. Correnti

S. Cameron Corson
David F. Corson

Jack Costello
Owen J. Costello

Walter H. Cramer
Wilson B. Cramer

Kenneth Curtiss
Timothy B. Elek, Jr.
George Lauderback, Jr.
A. Henry Schwab

Kenneth J. Dale
Marianne Dale

Frank E. Daniels
Carolyn F. Daniels

Philip H. Daubert
Eleanor L. Wolf

Don and Irma Davidson
William and Nancy Davidson

Edwin F. Davies, Sr.
Edwin F. Davies

Charles E. Davies
Robert W. Davies

Gomer H. Davis
Jean S. Davis

William E. Dearden
Mary Dearden

Nancy Jane Deeds
Warren and Barbara A. Cobb
Steven and Danielle Harris
Arthur J. and Jane Kurtz
Seubert & Associates, Inc.

Frank H. DeFago
Janice V. Williams

Jacob DeHoff
William H. Walter

Helen M. Demey
Thomas L. and Rebecca Boone
W. James Senseman and Family

Nancy H. DePrefontaine
Becki and Michael Dolhanczyk
Robert A. and Michele D. Witmyer

Marian E. Derk
Chester A. Derk, Sr.
Mr. and Mrs. Chester A. Derk, Jr.

Dorothy Dierking
Paul E. Allen

William L. Diffenderfer
Jean A. Diffenderfer

Sylvia Director
David M. Director

Robert W. Dommel
Thomas R. Dommel

Linda S. Doughten, Jr.
John W. Doughten, Sr.

Ronald Douglas, Sr.
Eileen J. Douglas

Ellen Marie Doyle
William J. Doyle

Elizabeth "Betty" F. Duckett
Robert C. Duckett

Loretta M. Duckett
Robert C. Duckett

Betty Dudley
Robert C. Dudley
Robert T. Dudley

Marie E. Dudley
Robert C. Dudley
Robert T. Dudley

Armando M. Duran
Stacy K. Duran

Charles R. Dutil
Delores K. Dutil

Sandra J. Duvall
Gerald E. Duvall

Walter F. Dyer
George W. Ullrich

Carl Eastridge
Harry L. Wheeler

George E. Eberhart
May E. Eberhart

Lee Eck
Edmund S. Ludwig

Donald L. Eckert
Jean V. Eckert
Linda N. Ferguson

Ruth M. Eckert
Jean V. Eckert

Richard H. Eckhart
Albert C. Menger, III

Faye G. Ecksel
Bounce Media, LLC
Perry S. Ecksel

Jerry F. Edgerton
Stuart L. and Barbara G. Brown

Edna Mae M. Edsall
James H. Edsall

George E. Edwards
Mary C. Edwards

Les Ehringer
Toni L. Drabant

Mary E. Ehringer
Toni L. Drabant

Romaine E. Ellinger
John M. Lafferty

Charles W. Elliott
Margaret L. Elliott

Barbara J. Emert
Joan E. Short

Lillian Emery
Robert T. Emery, Sr.

Richard E. Enck
Esther A. Enck

Nancy J. England
Robert M. England

Irvin M. Engle
Joseph S. Meizen

Howard R. Engles
Doris D. Engles

- James T. English**
Margery B. H. English
- John and Laura Enie**
Carl J. and Carol D. Willis
- John D. Enie**
Mark J. Enie
- Laura M. Enie**
Mark J. Enie
- Marjorie A. Enterline**
John H. Enterline
- Edwin B. Erickson**
Edwin B. Erickson, III
- Jimmie G. Erwin**
Jimmie G. Erwin, Jr.
- Donald E. Eshelman**
Norma L. Eshelman
- Joseph U. Esper**
Thomas Esper
- Theopholis G. Ewing**
James W. and Kitty Maiden
- Owen F. Eyler**
William Skumanich
- H. Howard Fasnacht**
Richard E. Brandt
- Kenneth James Faub**
Richard J. Cudd
- Arthur R. Fausnacht**
E. Lillian Fausnacht
- Kenneth R. Faux**
L. Sherwood Lennartson
- Charlotte Z. Fehl**
Jacob H. Fehl, Jr.
- Palsey Ferguson**
Thomas D. and Linda Ferguson
- Robert Ferguson**
Lynne C. MacMath
- William F. Fields**
Ann T. Fields
- Dorothy B. Fisher**
William S. and Judy Fisher
- Harry L. Fisher**
William S. and Judy Fisher
- Ruby Jane Fisher**
Joseph M. Fisher
- Robert John and Loraine N. Fletcher**
Robert James Fletcher
- Herbert S. Ford**
Mark McCulley
- Charles T. Fowler**
Conrad J. Fowler
- Eileen E. Fox**
Charles R. Hazelwood, Jr.
- LeRoy W. Fox**
Jean A. Diffenderfer
- David A. Frailey**
Michael J. Frailey
- William L. Frankhouser**
G. Edward and Rowena H. Morelock
- William L. Frankhouser**
Carl E. and Neda Mae Wert
- Virginia R. Frankhouser**
The Cementworks, LLC
Thomas M. and Geraldine M. Werner
- Frank W. Free**
Evelyn M. Free
- Robert W. Freet**
Doris Freet
- Arlyn B. French**
Richard M. Agler
- Rudolph A. Freudig**
David W. Freudig
- Robert S. Frick**
Michael S. Frick
- Andrew O. Friedrich**
Andrew E. Friedrich
- Frances M. Funk**
Masonic Village Piece Makers
Quilt Club
- Thomas Melvin Galliford**
Vivian A. Galliford
- Stephen Gally**
Henry R. and Martha Gally
- Barbara E. Garnes**
Charles A. Garnes
- Paul K. Garver**
A. Preston and Brenda L. Van Deursen
- Jonathan J. Geisel**
Hon. and Mrs. David G. Lowe
- Donald F. Geschwindt**
Karl D. and Mary Ellen Geschwindt
- June E. Gibson**
Family of June Gibson
Gary L. James
James Smith Dietterick & Connelly, LLP
Doris L. Kohr
- Jack L. Gillmore**
Vicki Gillmore
Harry and Doris Longenecker
- Roy Glass**
Don L. and Madeline J. Hennon
- Robert D. Gleichert**
Roger M. Lewis
- Elaine Glose**
Eric B. Blew
- William M. Glose, Jr.**
William M. Glose, III
- Walter O. Goehring**
Robert L. Goehring
- Robert (Bob) Goffus**
George D. Miller
- Alfreda Goldblatt**
Fred H. Goldblatt
- Anna K. Gonano**
Erasmus E. Gonano
- Mr. and Mrs. Hugh Goodhart**
Mr. and Mrs. Floyd R. Sowers
- Laura Gouge**
W. Douglas Gouge
- Jack Gray**
Anne B. Gray
- Pauline A. Graybill**
Warren and Helen Heidelbaugh
- Naomi and Harold Green**
William H. Green, Jr.
- Frances D. Greenawalt**
Joan Moss
- Ralph H. Greenawalt**
Keith L. Greenawalt
- Sally Greiner**
James O. Benson
- Robert G. Griffith**
Marguerite H. Griffith
- Vilot Griffith**
Bertram E. Griffith, Jr.
- Betty J. Grove**
Harold J. Bucks
- Delmar R. Grove**
Harold J. Bucks
- Sara Gunning**
Sweet Ovarations, LLC
- Maxine E. Gustafson**
Eagle Alliance
William G. and Linda A. Gustafson
Eugene and Jean Logan
Dwayne and Barbara Mercer
Mercers
George and Martha Vaeth
- Jack V. Haas**
Thomas M. and Geraldine M. Werner
Carl E. and Neda Mae Wert
- Edward C. Hahn**
Carroll S. Arnold
- Henry E. Haller**
The Henry E. Haller, Jr. Foundation
- Harold L. Hammaker**
George R. Moad
- Ervin C. Hamme**
Jayne K. Meischker
- Betty L. Hamsher**
Dennis J. Hamsher
- Bruce F. Harbaugh**
Mary A. Harbaugh
- Howard (Bud) T. Hardie**
Donna L. Faub
- M. Helen Harp**
Mr. and Mrs. Herman S. Richard
- Leroy Harpster**
Jeffrey D. Fenstermacher
- Harold C. Hart**
Carroll S. Arnold
- Harry V. Hart, Jr.**
Elfrieda M. Hart
- Robert Hart, Sr.**
Robert L. Hart, Jr.
- Dale R. Hartman**
Dale W. and Margaret R. Miller
- John J. Harvey**
June I. Harvey
- Barry L. Hassinger**
Joan L. Hassinger
- William K. Hawthorne**
William R. Hawthorne
- Julia M. Hays**
John R. Hays
- Robert E. Hazen**
Bruce B. Dimmick
- Howard L. Headland, Jr.**
Margaret R. Headland
- Carol Ann Heater**
William M. Glose, III
- Mary B. Henneman**
Suzanne E. Anderson
- Dolores Herman**
Martin E. Herman
- Francis C. Herman**
Martin E. Herman
- Wilbur R. Herr**
Doris A. Herr
- Sidney S. Hersh**
Joel H. Hersh
- Sylvia Hersh**
Joel H. Hersh
- Charles Richard Hertel**
Janice S. Hertel
- Laurence G. Hettich**
Nancy M. Cline
- Neil A. Hiller**
Albert C. Menger, III
- Burton and Grace Hineline**
Todd L. Hineline
- Anna M. Hocker**
Elwood C. Hocker, Jr.
- Carl R. Hoenstine**
Karl A. Shilliff
- Virgie L. Hoffer**
Glenn H. Hoffer
- Ella Jane Hoke**
Josh S. Bayer
- Samuel E. Hoke**
Josh S. Bayer
- J. Richard Hollinger**
David L. Hollinger
- June E. Beyer Homan**
Carl D. Homan
- Downey D. Hoster**
Norma M. Hoster
- Jeannette I. Houseknecht**
Ronald J. Houseknecht
- Tom Huber**
Chris J. Huber, Jr.
- Kenton E. Hull**
June Hull
- Glenn E. Hummer**
Vicki & Bob Dolan Fund-
Foundation for Enhancing
Communities
- Joanne F. Hummer**
Robert and Vicki Dolan

Frederick (Bud) B. Hummler
 Charles W. and Dorothy Goffer
 Dallas L. Krapf
 Lockheed Martin AEHF
 Muncie Power Products, Inc.
 George W. and Doris B. Peters
 Thomas E. Plank

Calvin E. Hutchison
 Carl K. Hutchison

Vera Inshetski
 Donald D. Evans

Deborah J. Jaspan
 Michael E. Jaspan

Helen M. Jaymes
 Carl F. Jaymes

Gerald E. Johns
 Irmgard Johns

Audene M. Johnson
 Donald R. Johnson

Betty Lou Jordan
 Carl Jordan

Louella M. Judd
 John E. and Barbara J. Milcoff

George B. Kahmar
 Doris K. Kahmar

Gene R. Kalbach
 Carol A. Kalbach

Joseph S. Kambic
 Conestoga Title Insurance Co.
 Barbara A. Kambic

Herbert W. Kausch
 Rebecca N. Kausch

John E. Kavanaugh
 James J. Kavanaugh

Raymond C. Keener
 Dale R. Stump

Bonnie Kenderdine
 Elvin M. Warner, Jr.

Rosalie I. King
 Hummelstown American Legion
 Auxiliary Unit 265
 Hummelstown American Legion
 Post 265
 Quittie Woods, Inc.

Claire E. Kistler
 Beverly Schweitzer

Louise E. Kivler
 Donald C. Kivler

Edward William Klaiss
 Frederick H. Klaiss, Sr.

Irvin D. Kline
 Mary Dearden

Virginia S. Knight
 Robert W. Knight, III

John H. Kodak, Jr.
 Alfred R. Adkins, Sr.

Edna Mae Koenig
 J. Wesley Rineer

Arlene Koppenhaver
 Dean E. Koppenhaver

Dorothy L. (Dottie) Koser
 Robert L. Koser

Ruth Kramer
 Theodore C. Leventhal

Guy N. Kratzer
 Gary G. Kratzer

William E. Kruse
 Edna M. Kruse

Robert L. Kwiatkowski
 Patricia A. Kwiatkowski

Mary E. Laney
 Earl W. Laney

Bernice M. Lasher
 James I. Lasher

Clarence E. Lauer
 Dorothy E. Lauer

Donald W. Leavitt
 Mary Q. Leavitt

Evelyn O. Levis
 Richard T. Levis, Jr.

Daniel G. Lewis
 Ivor F. Lewis

Elaine T. Lewis
 Roger M. Lewis

John W. Liebegott
 Nancy Liebegott

Ellen B. Linvill
 Karyn F. Grainger

George Lipko
 Orthovita, Inc.

Dominick Lizzi
 David Lizzi, Sr.
 David A. McCormick

Dave Long
 Norman F. Long, Sr.

E. Russell Long
 R. Richard Wright, Jr.

Paul S. Long
 Janicemarie W. Long

Richard J. Loughin
 Mary Ann Loughin

Loved One
 Clara Belle Beale

Paul W. Lucas
 Ann M. Lucas

Bert W. Luckenbill
 William B. Luckenbill

W. Warren Luckenbill
 William B. Luckenbill

Sarah Jean Luebbe
 Harry C. Luebbe, Jr.

Thomas Lungert
 Edward C. Kasten, Sr.

Irene Lutz
 Susan E. Wagner

Geoffrey E. Mann
 Horace L. and Prudence Mann

Kenneth C. March
 Donald E. March

Pauline L. March
 Donald E. March

Ginger Marks
 Lillian J. Cunningham

Herbert L. Marti
 Donald and Phoebe Marti

Charles W. Martin, Sr.
 Althea N. Martin

Thomas H. Martin
 Elizabeth A. Martin

Alfred Mash
 Alfred M. Asheuer

Carl A. Massa
 John J. B. Lerch, IV

Mary Alice Masters
 Carol Welconish

Florence E. Maugans
 Michael P. Maugans

Audrey J. McBride
 Lisa M. McBride

Warren B. McCarty
 Boyd Senior Planning, LTD.
 Linda Kleppinger

Eugene E. McClain
 Elizabeth S. McClain

Jean D. McClester
 Furman South, III

Byrd W. McCracken
 Marjorie A. McCracken

Russell E. McCracken
 H. Edward and Barbara R. Carr
 Jack E. McCracken

Olen S. McCutcheon
 Calvin S. McCutcheon

Harold S. McElroy
 Carolyn R. McElroy

Mary Ursa Medgie
 Maureen Cornell

Barbara A. Menear
 Donald E. Menear

John I. Mengel, Jr.
 F. Dale Schoeneman

J. Freeman Menzie
 Robert J. Menzie, Sr.

Helen Mercer
 Thomas M. and Carol A. Mercer

Thomas S. Merwin
 Frances M. Comly
 John F. and Marybeth W. Raidy

Edward J. Messner
 Edward M. and Jeanne Messner

Dorothy G. Meszaros
 Kenneth A. Reigle, Jr.

David P. Methlie
 Margaret P. Methlie

Paul E. Meyers
 Donald C. Meyers

Robert W. Meyers
 Twila J. Meyers

Jerry Migrala
 Mark A. and Eileen Pagano

Bill Miller
 James D. Mayer

Edwin A. Miller
 Robert W. Avery

Ernest R. Miller
 Carroll S. Arnold
 Ellen N. Weaver

Marion J. Miller
 George E. Miller
 Debra J. O'Connell
 Robert F. Remaley
 Marian J. Tichy

Samuel L. Miller
 Elaine M. Miller

William H. Miller
 Jeanne L. Miller

Marvin L. Millhouse
 Judith A. Millhouse

Barry G. Minnicks, Sr.
 Barry G. Minnicks, Jr.

Robert F. Moore
 Carroll S. Arnold

Edward R. Morgan, III
 Eugene W. and Julianne Bitchko
 Bucko and Donna Blosinski
 James F. and Anne Bonner
 JL Honberger Co, Inc.
 Harold R. Leh, Jr. and Family
 Michael J. Rittenhouse
 Michael F. Rogers and Family
 David and Lynda Setton
 University Lodge No. 51

Mark Michael Morkin
 Robert E. Umbaugh

Joel Morris
 James W. Morris

David B. Morrison
 James A. Morrison

Charles A. Morrow
 Albert J. Ferry, Jr.

Vernon W. Morton
 Sharon Maiorana Family
 Alvin L. Morton
 George W. Morton

George C. Mosch
 Paul G. Mosch

Patrick J. Moses
 Robert Burns Lodge No. 464

Leroy Mountz, Jr.
 Carroll S. Arnold

Alma Madora Peterson Moyer
 Francis K. Moyer

Archie H. Muir
 David G. Roberts, Jr.

Frederick E. Muller
 Frederick E. Muller, Jr.

Stephen E. Muller
 Frederick E. Muller, Jr.

Robert M. Mullis
 James B. Thompson, Jr.

Floyd E. Mummert
 George R. Moad

Thomas P. Murgitroyde, III
 Harry Houseman Lodge No. 717

Eleanor Myers
 Jerry A. Myers

Ethel M. Myers
 Joyce Myers-Brown

Jean L. Myers
 Jerry B. and Anne W. Lauer

- Leon C. Myers, Jr.**
Jay D. Myers
- Orton L. Myers**
Jerry A. Myers
- Kenneth T. Nagie**
Gail L. Nagie
- Emmeline Narehood**
Dennis R. and Barbara Narehood
- Thomas H. Neal, Sr.**
Mr. and Mrs. Thomas H. Neal, Jr.
- James C. Neering**
Edward A. Tessaro
- JoAnn R. Nelson**
Dale R. Nelson, Sr.
- Marvin R. Newpher**
Matthew J. Blanski
- James C. Nickle**
Thomas and Terry Kamerzel
Samuel L. McElheny
- Hedwig (Hedy) Noll**
Hargis L. Knoechel
- Jeanne C. Noll**
Allen E. and Nancy E. Wenrich
- Robert T. Norcross**
Thomas Q. Miller
- James G. Novinger**
Doris M. Novinger
- Wallace R. Nuttycombe**
Albert G. Rutherford, II
- Ronald Oberholtzer**
William R. Oberholtzer
- Thomas Oberholtzer**
William R. Oberholtzer
- William "Jack" M. Oliver**
Marianne O. Ostendorf
- Jacob S. Overbeck**
Michael D. Overbeck
- William Jesse Pague**
Helyn J. Pague
- W. Robert Painter**
G. Marie Painter
- Patricia M. Palo**
Jess A. Leidig, III
- Parents**
William M. Detterer
- Parents**
Mr. and Mrs. Roger C. Vandermark
- Deceased Past Masters**
Eureka Lodge No. 290
- Anna Pedrick**
G. Edward and Rowena H. Morelock
- Blaine and Charles Perkey**
Preston R. Perkey, Sr.
- Alma M. Perkins**
200th Red Horse Squadron
- George W. Peters**
Charles J. and Linda Frick, Jr.
- Joseph and Leona Petrosky**
John J. Donati, Jr.
- David Mills Phillips**
Daniel A. Phillips
- David W. Phillips**
Karren E. Scott
- Robert E. Pickel, Sr.**
National Steel Car Marketing & Sales Team
- Minute Player**
Mr. and Mrs. Robert I. Player
- Margaret K. (Peg) Pollock**
Stuart L. and Barbara G. Brown
- Charles W. Potter**
Franklin-St. John's Trinity Lodge No. 221
- Darrell E. Powell**
Frederick C. Powell
- Florence I. Poxon**
Robert A. Poxon
- John R. Price**
Barry L. Noll
- John W. Prosser**
William A. Prosser
- Jack Purcell**
William Slater II
- Samuel W. Rawhauser**
Craig S. Hicks
- Richard H. Ray, Sr.**
Richard H. Ray, Jr.
- Cora Reachard**
Randall M. Gotwalt
- Joanne C. Reber**
Richard M. Reber
- H. Stanley Redline**
Duane C. Redline
- Benjamin D. Reed**
Julius F. and Phyllis A. Iacocca
- Harold J. Reese**
Robert L. Bassler, Jr.
- John S. Reese**
Family of John S. (Jack) Reese
- David H. Reiter**
Albert C. Menger, III
- Richard E. Reitz**
Gibbs & Cox
Walter E. and Diane Mills
- Rena R. Renshaw**
Ronald R. Renshaw
- Jean Rhein**
Frank and Joanne Naples
- David A. Rice, Sr.**
Nancy S. Rice
- Earl Richards**
Forrest L. Shadle
- Israel and Malka Richter**
Lodge No. 126 - Israel and Malka Richter Fund
- Howard F. Rissmiller**
Albert C. Menger, III
Bonita Y. Rissmiller
- Elias Ritter**
Clair E. Ritter
- Ernest E. Ritter**
Clair E. Ritter
- Joseph Rocci**
C. William Autro
- Robert J. Rodibaugh**
Danny G. Hellmann
- James C. Rogers, Sr.**
James C. Rogers, Jr.
- David Ross**
Albert C. Menger, III
- Paul H. Ross**
Erdean B. Ross
- Robert A. Roux**
Carl S. Boselli
- Henry and Catherine Ruoff**
Bruce H. Ruoff
- Ronald B. Ruth, Jr.**
Ronald B. Ruth
- James Rutherford**
Albert G. Rutherford, II
- Jonathan D. Rutkowski**
Daniel A. Rutkowski
- Kenneth J. Rutt**
Kay E. Bucci
- Edward H. Rutter**
Anthony and Linda Ambrose
- Ruth E. Rutter**
Anthony and Linda Ambrose
- Loren G. Sadler**
Joanna B. Sadler
- Edward A. Sahli, Jr.**
Lynda G. Sahli
- Lillian B. Sanders**
C. Vernon Sanders
- George H. Sargen**
Betty H. Sargen
- Billie J. Savickas**
John S. Savickas
- John M. Savickas**
John S. Savickas
- Glenn A. Schaeffer**
Rodrick L. Miller
- Gordon H. Schlosser**
Vance E. Steadman
- William O. Schmid**
Otto R. Schmid
- Albert L. Schmidt**
Eric L. Schmidt
- John H. Schmidt**
Charles F. Schwender
- Helen L. Schneider**
Thomas M. and Geraldine M. Werner
Carl E. and Neda Mae Wert
- Otto S. Schneider**
Fred H. and Ingrid B. Greim
Eugene W. and Jacqueline Hieber
James and Margaret K. Kotz
Erich F. and Rita T. Lukas
Stanley M. and Ginnie Maminski
Omega Delta Psi Sorority
Sigrid Sieberer
Mr. and Mrs. Willliam F. Wagner
- Joseph H. Schneitman**
Wayne L. and Mary Dietrich
- J. Carlton Schuldt**
Gerald R. and Madeline M. Schuldt
- Cathy Schulte**
Larry J. and Carol S. Wolford
- John F. Schwartz**
Victor J. Reale
- Thelma M. Schweinsberg**
Harry E. Schweinsberg
- John Scott, Sr.**
James E. Scott, Sr.
- William S. Scullion**
Dennis W. Scullion
- F. Louis Seibold**
Kenneth A. Parlee
- John O. Seitz**
John O. Seitz, III
- Taylor Seitzinger**
John J. Seitzinger
- Myer S. Shandelman**
Myer S. Shandelman Trust
- Edith S. Shank**
E. Lillian Fausnacht
- Warren Shank**
E. Lillian Fausnacht
- Eileen F. Shanor**
Mr. and Mrs. Rudolfo Espinosa
Microsoft Matching Gift Program
Leonard C. and Mary C. Newman
- John M. Shaud, Jr.**
Mary H. Shaud
- David B. U. Shearer**
George W. Ullrich
- Jess B. Shelley**
Judith A. Shelley
- Joanna Sherman**
Christian E. Sherman
- Evelyn M. Shertzer**
Richard H. Shertzer
- James C. Sherwood**
George Nakonetschny
- Herbert C. Shields**
Barbara E. Shields
- Gerold Shuller**
Barry L. Zimmerman
- Harold L. Shumaker**
Eleanor A. Shumaker
- Anna Labon Sims**
David and Veronica Sims
- George Sims**
David and Veronica Sims
- George D. Sload**
Benchmark Construction Company, Inc.
- Joyce E. Smith**
Frederick G. and Jean K. Dent
Tall Cedar and White Rose
Clown Club
- Mr. and Mrs. Ralph H. Smith**
William H. and Judith A. Kauffman, Jr.

Patricia M. Smith
Richard J. Criqui, Jr.

Rose G. Smith
Elliott H. Loden
Lillian P. Wanner

Thomas A. Smith
Susan F. Smith

Sally G. Smithgall
Donald L. Smithgall

Florence S. Snyder
David L. and W. Joyce Merkel

Kenneth K. Snyder
Ralph R. Brown

Kenneth M. Snyder
Erma A. Snyder

Norine J. Snyder
Charles J. Snyder, Jr.

Verna Soltis
David and Veronica Sims

Mr. and Mrs. D. Lester Sowers
Floyd K. and Caroline G. Sowers

Helen M. Soyke
Edgar A. Soyke

Mary A. Spallone
Joseph E. Spallone

Robert Spangenberg
Larry J. and Carol S. Wolford

Pauline Spangler
Delbert L. Skinner
Fern E. Skinner

Dorothy G. Spickler
Joseph and Wendy Bryan

Henry K. Staiger
Martin H. and Gabriele M. Bayer

Helen I. Staman
William T. and Jane Staman

James William Stark
Sandra Stark Shields

Lee G. Stauffer
Mary J. Stauffer

James H. Staver
Nellie D. Staver

Amelia Esther Stevens
Bruce W. Stevens

Dolores S. Stevenson
Harry and Joan Borie
John F. Holtz and Debra A.
Borie-Holtz
James E. Stevenson, III

Henry J. Stock
Mary L. Stock

H. Barton Stone
Helen A. Stone

George M. Stormfels
Eric C. Stormfels

Eleanor Stroud
Eileen F. Rind

John Stumbaugh
Richard F. Maffett

Shirley Swartz
Edwin R. Seace, Sr.

Samuel Taggart
Samuel M. and Dianna M.
Taggart

Samuel Tait, Jr.
Gale M. Koerner

Frank R. Tarby
Havis, Inc.

Edward J. Teaman
Brian E. Teaman

Margaret V. Terry
Thomas M. and Geraldine M.
Werner
Carl E. and Neda Mae Wert

Zolenig Terzian
Karen M. Jehanian

The "Major"
Benjamin G. Fay

Harry C. Thomas
Horace L. and Prudence P. Mann

Wm. Bruce Thomas
Phyllis J. Thomas

Robert E. Tiley
Nancy A. Tiley

Mary E. Tonge
Paul E. Allen

William H. Toomey, Jr.
Doris M. Toomey

Mildred G. Traister
Lakeport Garden Club

Robert G. and Frances C. Trautman
Ann T. Fields

Suzanne Tschudy
John W. Tschudy

Billy R. Turner
Danny L. Turner

Edward V. Twigg
Edward V. Twigg, II

James W. Vaughn
Robert W. Vaughn

Patrick J. Waardenburg
Harold V. and Caroline J. Hartley

Wesley R. Wainwright
Lester G. Nefferdorf

Larry Walk
CWP Industries, Inc.

Philip A. Walker
J. Robert Taylor

George D. Walter
William H. Walter

Gladys Maxine Walter
John A. Walter

Elvin G. Warfel
Janice M. Warfel

Elvin M. Warner, Jr.
Shirley R. Seldomridge
Leatrice A. Warner

Kenneth M. Watkins
Frackville Lodge No. 737

Harry Verner Watson
Barry V. Watson

Wilbur (Bud) E. Weaver
Donald L. and Joan Grier
Wilbur R. Weaver

Robert S. Weed
Robert T. Weed

E. Nelson Weir
N. Bruce Weir

Barbara E. Weisser
Marvin A. and Rosalie M.
Cunningham, Sr.
Excelsior Mark Lodge No. 216
Brenda Appelgren Ferich
Norman A. Fox
Sandra L. Muffley
Newtown Lodge No. 427
James A. and Sandra Rawle, III
Jay W. and Nancy E. Smith
Mildred D. Smith
Marvin G. Speicher
George and Nancy J.
Stockburger, IV
Edward O. Weisser

Thomas O. Werner
Robert E. Werner

Karl E. Werner
Robert E. Werner

Glenn J. Wert
Bruce B. Dimmick
Elvin M. and Leatrice A.
Warner, Jr.
Arthur J. and Dorothy G. Wert
Carl E. and Neda Mae Wert

Marguerite M. Wert
Donn Corban
Edward B. McCartney
Donald E. Miller

Carl B. Wesner
William L. Wesner

Beatrice A. Whitmer
Marc and Ann Falcinelli

Irene B. Wieber
Frances M. Comly

Henry M. Wildasin
Carl E. and Neda Mae Wert
Ann A. Wildasin

Donald L. Williams
Barbara D. Williams

Mildred Williams
Marjorie E. Williams

Samuel M. Williams
Janice V. Williams

William H. Williams, Jr.
Marjorie E. Williams

Herman C. Willis
William J. Reaghard
Carl J. and Carol D. Willis

Robert M. Wisser
Randel Bilger

Helen L. Wojcik
Edward E. and Darlene M.
Donnald

Richard W. Wolf
William E. Zinkel

Herbert C. Wolstoncroft, Jr.
Mr. and Mrs. James A. Kehl

Raymond R. Wright
R. Richard Wright, Jr.

William W. Wrigley
Joseph P. Wrigley

Janice D. Wyberg
Charles J. Wyberg

Robert E. Yohey
Kail M. Yohey

Janet W. Yost
James and Peggy Howard
Richard Wig

Dorothy L. Young
Central Penn Nursing

John K. Young
Thomas F. Toscani

Lorraine Young
Vincent J. and Carol A.
Mitchell

Edward I. Zall
Greta L. Kenney

Harry F. Zeigler
John M. Dolan, III
Michael A. Mineo
Bill and Grace Morton
PSECU

Harold J. Zell
Charles M. Zell

Mr. and Mrs. Leroy S. Zell
D. Richard and Barbara Zell

Robert H. Zima
Ronald Buckwalter

Lawrence B. Zimmerman, Sr.
Guy K. Zimmerman

Joseph S. Zimmerman
Eureka Lodge No. 290

Dawn Zimmerman-Morpurgo
Thomas F. Zimmerman

William F. Zinkel
William E. Zinkel

Eleanor Zipf
John C. Grant
Linda L. Lager
William Slater II
Wayne P. and Renee A.
Wagoner

Robert S. Zorger
Falmouth Civic Association

BEQUESTS

Listed are individuals who made a provision in their Will to leave part of their estate to one of the Masonic Charities and whose generous contributions were received in 2013.

Edna M. Barnes	Harry E. Donson	Flora M. Jones	Joseph J. McKelvie	Fern Wagner
Franklin D. and Irma G. Beard	Harry M. Fouts	William H. Keen	Dorothy A. Netherwood	Erma L. Walton
Howard W. and Betty L. Breaw	Charles and Mary Gerwig	Howard Kessler	Eugene S. Netsky	Janice M. Warfel
Ralph E. Buck	Jerome E. Giles	Marilyn M. Kimmerly	Cecile E. Oakes	Louise R. Weddell
Martha E. Budge	Helen E. Groome	Edna V. Kiser	Vesta B. Pittman	Daniel L. Weller
Joseph C. Burke	Clyde M. Hallett	A. Naomi Klauser	Bruce H. Ruoff	Eleanor L. Wieder
Miriam B. Cocklin	Earl L. Henuber	John S. Kline	Sandra C. Schenk	LaRue J. Wise
Isabelle W. Croft	Ruth L. Hodge	Lawrence Kling	Lloyd K. Sickles	Lynn Ebert Zettlemoyer
Edward J. Dart	Robert L. Holliday	Frederick J. Lippert	William F. Spilka	
Estella C. Dickinson	Harry E. Horn	Homer E. and Harriet D. Lytle	Halvard A. Sproger	
	Miriam Davis Huebner	Herbert L. Marti	Dennis J. Staley	
	Edward L. Jeckel		Kermit H. Still	

MASONIC CHILDREN'S HOME CENTENNIAL SOCIETY

Members of the Masonic Children's Home Centennial Society supported the Masonic Children's Home \$10 million campaign in honor of its centennial anniversary in 2013.

Anonymous	Frank and Lois Eiler	Alfred and Florence Molin	Joanna B. Sadler	James E. and Mary Ellen Tarman
Walter Balliet	Doris Davis Engles	Caroll L. Montgomery	Frederick P. and Mary Jane Sample	Doris Garger Torr
Robert and Joanne Bateman	Marilyn and Bob Forney	Robert J. and Joan R. Muffler	Anthony D. and Cheryl E. Schafer	Robert and Joyce Umbaugh
Jane H. Bird	Leland A. Hale, Jr.	Joseph E. and Barbara A. Murphy	Robert and Doris Schaffner	Whitey and Arlene Von Nieda
Robert R. Breinig	S. Eugene and Sally Herritt	Quincey C. and Elizabeth F. Norwood	Richard E. and Mary Ellen K. Sheesley	Arthur J. and Dorothy G. Wert
Richard L. and Shirley F. Chamberlain	Evelyn Hunter-Longdon	William R. Oberholtzer	John W. and Gail G. Shupe	Florence D. Wilson
Margaret E. Chancellor	Shirley M. Kaupp	G. Marie Painter	Jay W. and Nancy E. Smith	Donald S. Wood
Charles and Carol Chew	Arthur and Marion Lester	The Preis Family	Ivan and Hannah Snyder	Simon L. Zimmerman
Joy and Mason Crawford	Richard E. Lloyd	Eleanor S. Rankin	Floyd R. and Carolyn G. Sowers	William E. Zinkel
Frank J. DeRosa, Sr.	Herb Marder	Christian and Constance Reynolds	Marian L. Spitler	
Raymond and Lynn Dietz	Herbert R. Markey	Jim and Dot Rouke	Bill and Dot Stout	
Margaret B. Downes	Earl B. Markley			
James. H. Edsall	Michael and Linda Mattes			
	Larry and Carol Miller			

MASONIC CHARITIES LOYALTY CLUB

Members of the Masonic Charities Loyalty Club are individuals who have committed to supporting their Masonic charity of choice through the R.W. Grand Lodge of Pennsylvania with a monthly gift, which is automatically deducted from their bank account or charged to their credit card. Membership grew 44 percent over the last year, and listed below are those who joined in 2013. To join the Masonic Charities Loyalty Club, please call the Office of Gift Planning at 800-599-6454 or complete the enclosed business reply envelope.

Kenneth H. and Karen M. Arters	John P. Ippolito	Robert and Anna Nelson	Clarence and Cynthia Riley
Mark E. Ballora	Ricky E. Knaub	David B. Nemec	Benjamin A. and Krista Schoener
Emil J. and Gail Brenkus	Theodore M. and Veronica LaBuda	Dale E. Newhart	James G. Smith
Dieter G. Dauber	Preston J. and Anna M. Layfield	Robert J. Noel	Walter H. Stryczynski, Jr.
Kristofer W. Dewberry	John E. Martinson, II	Barry and Joan Olanoff	William R. Taylor, Jr.
Bruce M. English	Samuel L. McElheny	George K. Overly	Ronald and Dorthea Thomason
Joseph J. Gallicchio	Earl W. and Doris McKeever	Joseph E. Pascucci	David D. VanZant
William F. and Anna B. Gottschalk	Harold R. Moyer	Erick T. Potter	David and Pamela Whitenack
Deborah Hillard	Mona S. Murray	Richard B. and Nancy C. Reaney	James R. Whitney
Jesse S. Hudson		Ronald A. Reibie	Marty and Christina Zeamer

FRANKLIN LEGACY SOCIETY MEMBERS

Anonymous
 Ellis C.L. Adams
 Thomas M. and Mary E. Alban
 Donald L. and Kathleen M. Albert
 William Cameron Anderson and Alberta Danks Anderson
 Carroll S. Arnold
 Jane E. Arnst
 Jack R. and Jane H. Arthurs
 Charles A. and Betty M. Astfalk
 Ronald A. and Norma J. Aungst, Sr.
 Herbert D. Bailey, Jr.
 Captain Donald L. Baker
 Walter Balliet
 Ben F. and Lois A. Balmer, III
 George J. and V. Jane Balsley
 Larry C. Balthaser
 Donald P. Barber
 Rita Barty
 Fred E. and Dottie L. Basehore
 Robert and Joanne Bateman
 Martin H. and Gabriele M. Bayer
 John E. and Ann K. Berger
 Raymond and Jean Betz
 J. Richard Bishop
 Mrs. Jane E. Bitzer
 Mark R. Blasser
 Kenneth W. and Elaine K. Bleiler
 Alvin H. and Diane S. Blitz
 James H. and Jane M. Bonsall
 Mrs. Beatrice B. Bossler
 Nancy B. Brain
 Miriam L. and Paul F. Braun
 Clifford S. Breakey
 Allen and Rebecca Breed
 Robert R. Breinig
 Helen O. Brindle
 Austin C. Brown
 Rev. Raymond L. and Louise J. Brown
 Shirley Jean Brown
 Jay G. Brossman
 Richard H. and Jean M. Brumbach
 John K. and Nancy R. Brunner
 Edsel S. and Marie S. Bryner
 Franklin D. and Marilyn R. Caltagirone
 Mrs. Dorothy R. Carpenter
 Benjamin P. Carter
 Richard L. and Shirley F. Chamberlain
 Margaret E. Chancellor
 Richard H. and Theresa Cherry
 Elizabeth R. Chiartas
 Mr. and Mrs. Henry A. Clay
 George F. and Ruth J. Claybaugh
 Nelson E. Clements
 Edwin P. and Margaret M. Cover
 Jesse Raymond Cox
 Miriam J. Coyne
 Ruth and James Crouse
 Marvin A. and Rosalie M. Cunningham, Sr.
 Michael L. Curtier
 William C. and Susan L. Davis
 Joan M. Dellinger
 Phyllis C. Devine
 Raymond and Lynn Dietz
 Leona M. Dilliplane
 Margaret B. Downes
 Roland E. and Ruth Dunkelberger
 George M. Dyson, Jr.
 Col. Jerry F. Edgerton
 Irvin W. Edler
 James Edsall
 Bob Edward, Sr. and Helen Werner
 Frank W. and Lois C. Eiler
 David E. Elliott
 Doris Davis Engles
 Shirley H. English
 Richard B. Ernest
 Ann Ettline
 Robert L. Falzone
 E. Lillian Fausnacht
 Lucile A. Fetterolf
 J. Melvin Fisher
 Robert D. Fleming, III
 Carl R. and Arlene S. Flohr
 Alfred E. Flowers
 Marilyn D. Forney
 Robert C. Forney
 Norman A. Fox
 Oscar and Nancy Fox
 William A. Fox
 John W. and Virginia P. Francis
 Robert A. Frantz
 Catherine Margaret Frasca
 Samuel E. Fratis
 Lulu H. Frey
 Evelyn Fries
 Stephen and Patricia L. Gardner
 Rodney W. and Elinor O. Gartner
 Norma Gentile
 Walter K. and Sally Gerber
 Dean M. Gettemy
 Brother Richard and Sandra Gillie
 Carl M. Gilligan
 Vicki L. Gillmore
 Gladden and Eleanor Gingerich
 George E. Ginther
 Urban Ginther
 Loraine Glidden
 John J. Godlewski
 Marge Goode
 Nancy M. Gordon
 William and Anna Gottschalk
 Carl Gramlich
 Anne K. Gratz
 John O. and Donna M. Gregson
 Gordon R. and Norma L. Grubbs
 Harvey E. Gumto and Carol P. Gumto
 Howard L. Gutschow
 Georgia H. Haigh
 Mark and Karen Haines
 Leland A. Hale, Jr.
 Clarence E. and Betty L. Hall
 Frank and Ruth Hall, Jr.
 Harold E. and Margie Hartdung
 R. Joe and Shirley S. Hartman
 Dallas E. and Charlotte M. Haun
 Mrs. Frank Haven
 Margaret R. Headland
 Jim Heckman
 Eleanor Heinz
 John P. Held
 Sterling P. Hepler
 Sandra G. Herb
 Georgianna S. Herdman
 S. Eugene and Sally Herritt
 Beatrice Hess
 John P. Himes
 Mrs. Michael Hnat
 Wendell Hobbs
 Gwendolyn Hooper
 James R. Hornafius
 David L. and Judith L. Horst
 Robert Hotchkiss
 Peter S. and Mary D. Houts
 Mrs. Thomas S. Howe, Jr.
 Carlton and Betty Ann Hunsicker
 Mr. and Mrs. Thomas W. Iannuzzi
 Charles K. Jacobs
 Carol L. Jacobson
 Kim W. Jeffreys
 Albert E. and Irene L. Jochen
 Thelma D. Johnson
 Kenneth W. and Marcia J. Johnson
 Netti S. Jones
 Clayton J. and Theresa Karambelas
 Nelson M. Kauffman
 Shirley M. Kaupp
 Mrs. Erma Lo Kell
 Charles W. and Clara Kemner
 Frederick F. and Marjorie B. Kepner
 Patricia D. and C. Wilson Kile, Jr.
 Blanche Kinch
 William L. and Maureen H. Kingsbury
 Mary Anne Klemkosky
 Christian H. Kopp
 Emery L. Koszoru
 Sally and George Kraus
 Bro. William E. and June M. Kuebler
 Les and Carol J. Lanyon
 Eleanor B. Lashley
 Nancy L. Lawson
 Charles R. and Frances H. Lefever
 L. Sherwood and K.A. Britta Lennartson
 C. W. Lentz
 Marion Lester
 Ivor F. and Mary Ellen Lewis
 Ted and Meg Lichtenwalner
 Gene O. and Frances R. Light
 Julia E. Holeczy Linn
 William C. Loffelhardt
 Jean M. Long
 Ruth D. Long
 Bill and Angie MacIntire
 Howard and Engracia Mack
 Maurice G. Maen
 James W. and Kitty A. Maiden
 Horace L. and Prudence P. Mann
 Herb Marder
 Earl B. Markley
 Margaret M. Martin
 Ned A. and Phyllis B. Masenheimer
 Linda and Michael Mattes
 Linda J. Matthews
 L. F. McArthur
 Abram and Cora McClune
 John E. and Nancy M. McClure
 Clara H. McCurdy
 Ann B. McFadden
 Harry O. and Vivian S. McMullen
 James H. Meas
 George and Marian Metroka
 Alice J. Metz
 Elizabeth R. and Marlin L. Michael
 Carol, Larry and Rhonda Miller
 Mr. and Mrs. Carl L. Miller
 Dean R. and Brenda L. Miller
 Sophia Terry Miller
 Jeanette M. Milos
 Marlys Moir
 Alfred and Florence Molin
 Caroll L. Montgomery
 Donald B. Morgan
 Roland B. and Jill D. Morris
 Mary G. Morton
 Jeffrey S. and Susan R. Moyer
 Joan Muffler
 Joseph E. and Barbara A. Murphy
 Mrs. Jeffrey L. Nale
 Ruth K. and Robert G. Necker
 Bro. Carl E. and Cynthia K. Nell
 Myrl K. Noggle
 William M. and Bette K. Norris
 William A. and Carol H. Northey
 Doris M. Novinger
 Glenn W. Oakes
 William R. Oberholtzer
 Robert and Tricia Ochotny
 Virginia H. Orchard
 Merle L. Otto

Mark A. and Eileen M. Pagano
 G. Marie Painter
 Paul J. Palko
 Michael Papinchak
 Julia D. Patterson
 Mr. and Mrs. Richard E. Pencak
 Rick and Heather Peterson
 Fern B. Raff Pfister
 Robert C. Pine
 Robert S. and Alice S. Pinnock
 Howard E. Phillips, III
 Harold G. and Evelyn E. Preiksats
 Nancy R. Preis
 Thomas W. Price
 Joseph W. and Margaret H.
 Raffensberger
 Mrs. Glenn E. Raker
 Eleanor S. Rankin
 Edith M. Raup
 Robert J. and Anne Rebennack
 Joseph M. Reed, Jr.
 Captain Robert W. Reichard
 Gregory Repice
 Brother Christian B. Reynolds
 Constance J. Reynolds
 Jack B. and Ruthann Richey
 Julian A. Richter
 Fred D. and Carol A. Rissinger
 Thomas H. and Jeanette Robertson
 F. W. (Robie) and Ronnie Robinson
 George W. Robinson
 Carl C. and Ethel D. Roddy, Jr.
 James R. Rodisch
 Raymond G. and Sheila C. Roeder
 Don and Sandy Romberger
 Charles W. Ross
 Mr. and Mrs. James D. Rouke
 Fred and Beth Rudy
 William M. Ryan
 Frederick P. and Mary Jane Sample
 Anthony and Cheryl Schafer
 Doris C. Schaffner
 William F. Schieber
 Charlotte Schmidt
 Harold and Margaret Schmitt
 Dennis K. and Janice L. Schmuck

Fred C. Schoenagel, Jr.
 Gerald R. Schuldt
 James and Catherine Val Jean
 Schwirian
 Mrs. Charles H. Seekamp
 Margarite A. W. Selby
 Gary L. Shafer, Sr.
 Richard E. and Mary Ellen K.
 Sheesley
 James B. Sheffer, Jr.
 Bro. Warren R. Shenk
 James and Jane Shepard
 J. Jack Sherman and Grace S.
 Sherman
 Grace Shaffer Shields and C. Edwin
 Shields
 Joyce M. Shipp
 Horace C. Shuman
 John W. and Gail G. Shupe
 Carole and Jim Sieber
 Antonio J. L. Simoes
 Joseph W. and Judith A. Simon
 Shirley Sinclair
 William Slater II
 B. Jane Smith
 Ewing E. Smith
 Jay W. and Nancy E. Smith
 Karl H. Smith, Sr.
 Mary Alice Smith
 Ronald M. and Jeanne M. Smith
 Samuel Chambers Smith
 Fredrick R. Snyder, Esq. and Marian
 S. Snyder
 Ivan and Hannah Snyder
 Marvin G. and Shirley M. Speicher
 Cora Speidel
 Marian L. Spittler
 Halvard A. Sproger
 Arnold and Elsie Stackhouse
 Dennis J. Staley
 Nancy Standish
 Ila Faye and Richard L. Stare
 Dr. James W. Stark, Stark Family
 Trust
 Robert F. Stark
 Richard J. and Carol A. Stemmler

Carol and Tom Stephenson
 George W. Sterner
 Francis D. and Mary H. Stillman
 Mrs. Mary L. Stock
 Paul O. and Dorothy L. Stoeys
 Elizabeth M. Stout
 William S. and Dorothy S. Stout
 Marie D. Stringfellow
 Thomas K. and M. Joan Sturgeon
 Jack W. and Mary Ann Sucro
 William McKinley Summerville, Jr.
 Bro. and Mrs. John F. Swartz
 Walter L. Sykes
 Harlon H. Talley, Jr.
 Allen and Carol Tallman
 Michael Allen Taylor
 Jack M. Temsey
 Raymond E. and Annette M.
 Tierney
 Robert C. Tobias
 Isabel C. Tompkins
 Edward S. Topper
 Doris Garger Torr
 William and Roberta Traynor
 C. DeForrest Trexler
 George L. and Joan D. Turns
 Robert and Joyce Umbaugh
 John F. Van Horn
 Barry W. Van Rensler
 Stanley L. and Arlene Von Nieda
 Robert J. Wagner
 Harold E. Walchli
 William H. and Doris D. Walter
 Linda H. Wasserman
 Mr. and Mrs. David B. Weaver, Jr.
 Elizabeth Webber
 Mrs. J. Arndt Weicksel
 Edward and Barbara Weisser
 Arthur and Dorothy Wert
 Carl E. and Neda Mae Wert
 Margaret White
 Ruth Williams
 Florence D. Wilson
 Bryan S. and Jean Marie Windham
 Eugene Ledder Wolf
 Jeffrey and Sharon Wonderling

Donald Steele Wood
 Walter H. and Carolyn M. Wright, Jr.
 Paul A. and Nancy Yanushis
 Harry H. Yeager
 Barry C. Yingling
 Charles F. and Mona L. Yingling
 George E. Zimmerman, Jr. and
 Elizabeth A. Zimmerman

2013 MEMBERS

Anonymous
 Robert I. Becker
 Jane H. Bird
 Charles and Carol Chew
 Joy and Mason Crawford
 Earl W. Cutchall
 Jay E. Davis (MH '58)
 Frank J. DeRosa, Sr.
 Robert P. and Elizabeth F. Egge
 Ruth H. Eissler
 Hilbert Felton
 Charles F. Fleming, Jr.
 E. Lane Foster
 Peter Herman Heberer
 James Heidler
 Evelyn Hunter-Longdon
 Michael W. and Dorothy C. Lenker
 Paul D. Lesser
 Richard E. Lloyd
 Quincey C. and Elizabeth F.
 Norwood
 William W. Peters
 Rich and Bette Rodibaugh
 Joanna B. Sadler
 Bro. Terry L. Seiders and Lori A.
 Seiders
 Bro. John C. Stevens and Phyllis E.
 Stevens
 James E. and Mary Ellen Tarman
 James S. and Arlene S. Wentle
 Bro. Larry J. Wolford and Carol
 Spangenberg Wolford
 D. Richard and Barbara K. Zell
 William E. Zinkel



Leave a Legacy

The Franklin Legacy Society recognizes and honors persons of vision and foresight who have taken the initiative to strengthen and enhance the good works of one or more of the Masonic Charities of the Right Worshipful Grand Lodge of Pennsylvania through their estate plans.

If you have provided for one or more of the Masonic Charities in your financial plans, through a bequest, revocable trust, life insurance policy or retirement plan, you qualify for membership. Also eligible

are persons who have entered into a planned gift arrangement, such as a life estate, charitable gift annuity, charitable remainder trust or charitable lead trust with one of the Masonic Charities.

Members are recognized on a donor wall at the Masonic Village at Elizabethtown, listed in the Annual Report, invited to special events each year and given a distinctive lapel pin and book clock.

If you already have made a provision for one of the Masonic Charities in your financial plans or are considering an arrangement as listed above and would like to join the society, please complete and return the enclosed envelope or call us at 800-599-6454.

Office of Gift Planning

Masonic Charities
One Masonic Drive
Elizabethtown, PA 17022-2199

RETURN SERVICE REQUESTED

Non-Profit Organization
U.S. Postage
PAID
Elizabethtown, PA
Permit No. 16

Help us continue what we do today far into the future. A gift through your will or estate costs you nothing during your lifetime. It is a simple gesture with a lasting effect.



www.MasonicCharitiesPa.org or 800-599-6454